

HOPPER PI INFORMATION (TRIPLE GLAZED)

WITH MULTI-POINT HANDLE

*MIN DIMENSIONS 16" x 16" [406 x 406]

*MAX DIMENSIONS 66" x 36" [1676 x 914] or 36" x 60" [914 x 1524]

SCREEN OPTION

MAX OPENING VARIES

LIMITED OPENING OPTION @ 4" [102]

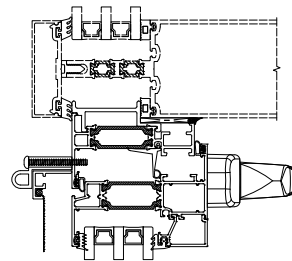
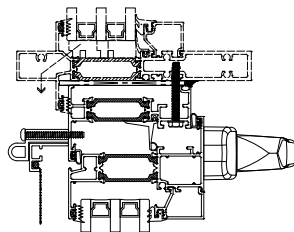
CUSTODIAL LOCK OPTION

**Based on (DLO) dimensions, Dimensions in brackets are in [mm] millimeters*

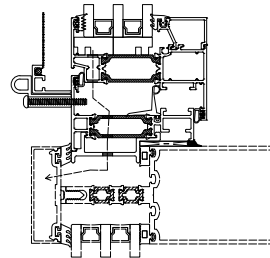
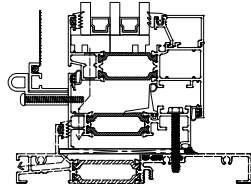
Window Integration

Curtain Wall Integration

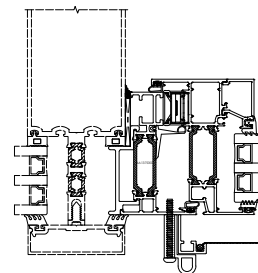
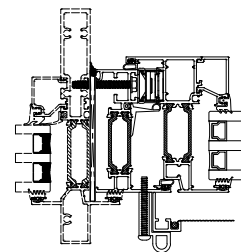
1



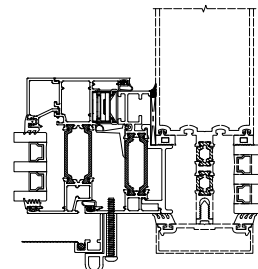
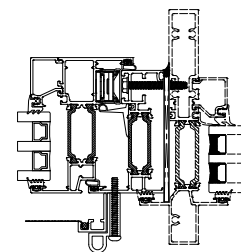
2



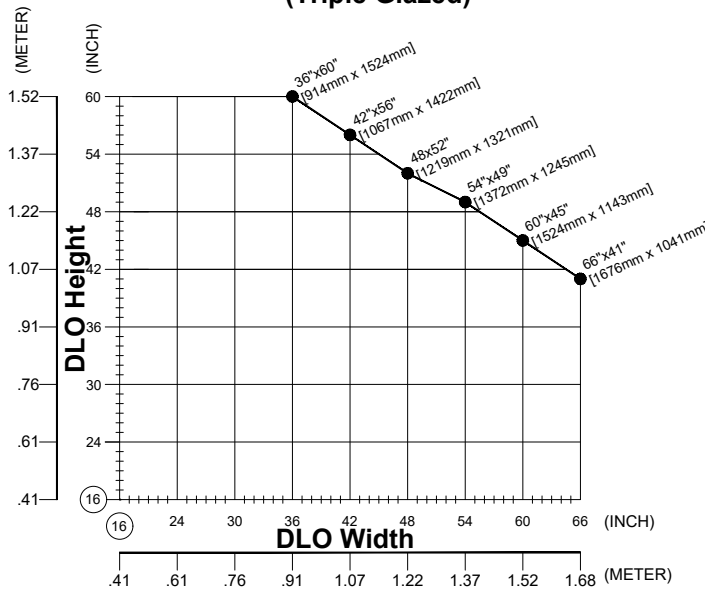
3



4



**BOTTOM HUNG PROJECT IN WITH MULTI-POINT LOCKING HANDLE
(Triple Glazed)**



Hopper hardware includes the following:

- MPL handle available in Silver, White, or Black finish
- One multipoint locking handle centered on the top of the sash
- One pair stainless steel 4-Bar Hinges
- Snubber set (as required)
- Glass stop for 1 3/4" [44.4mm] glazing
- Interior glazing spline



MPL HANDLE

Optional extras (must be specified at time of ordering or quotation):

- Insect screen (fiberglass or aluminum mesh)
- Custodial lock with removable maintenance wrench
- Sash limiters
- Hardware other than standard
- Glazing gasket for 1 1/16" [42.5mm] IGU



OPTIONAL CUSTODIAL LOCK WITH REMOVABLE MAINTENANCE WRENCH

Charts are based upon an insulating glass unit infill of 1 3/4" [44mm] overall thickness comprised of 6mm glass/13mm gas fill/6mm glass/13mm gas fill/6mm glass/

Using this chart: Ensure your largest maximum size falls within the above size limitation chart