

**HOPPER PI INFORMATION (Double GLAZED)**

WITH MULTI-POINT HANDLE

\*MIN DIMENSIONS 16" x 16" [406 x 406]

\*MAX DIMENSIONS 72" x 38" [1829 x 965] or 36" x 60" [914 x 1524]

SCREEN OPTION

MAX OPENING VARIES

LIMITED OPENING OPTION @ 4" [102]

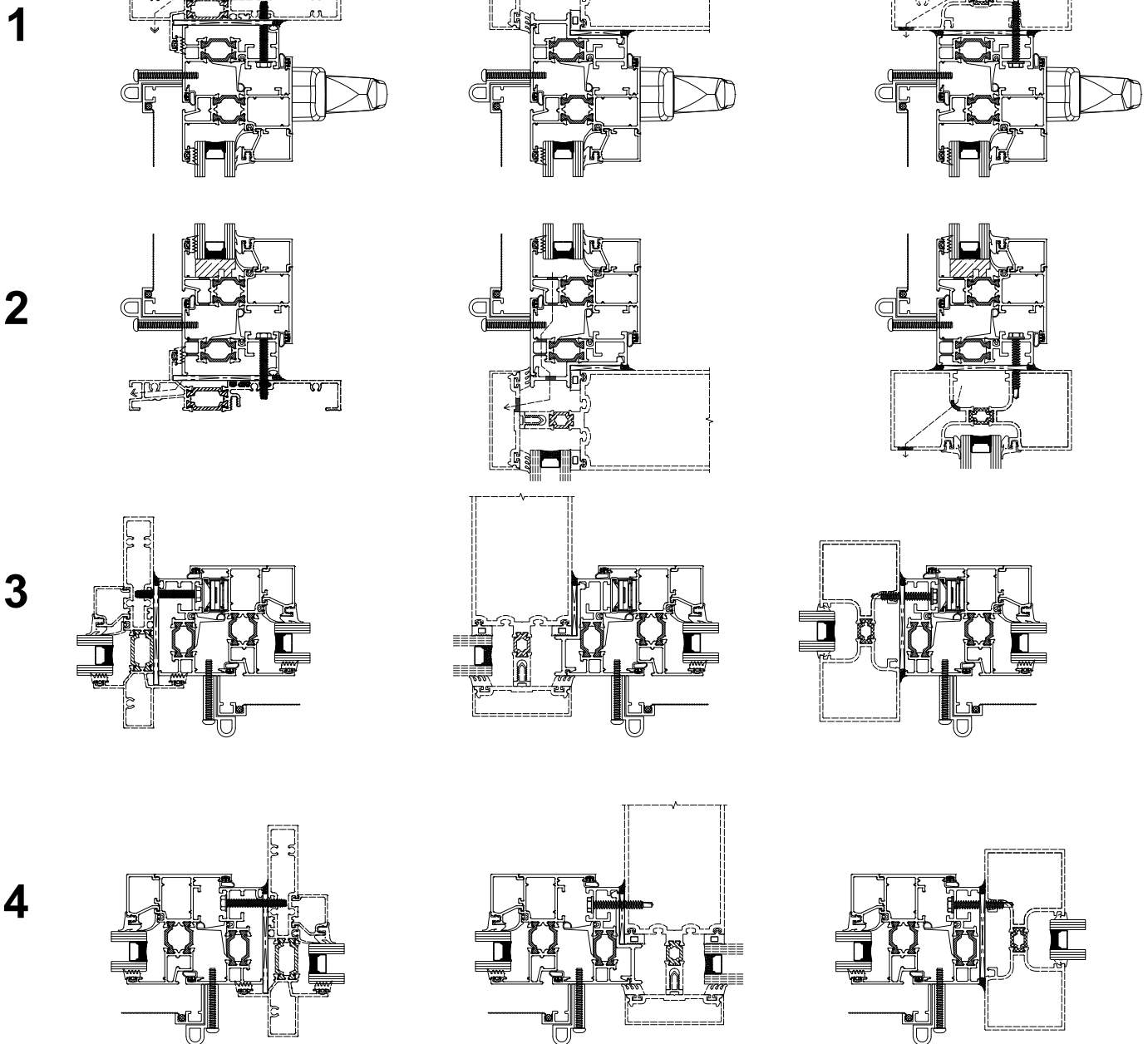
CUSTODIAL LOCK OPTION

*\*Based on (DLO) dimensions, Dimensions in brackets are in [mm] millimeters*

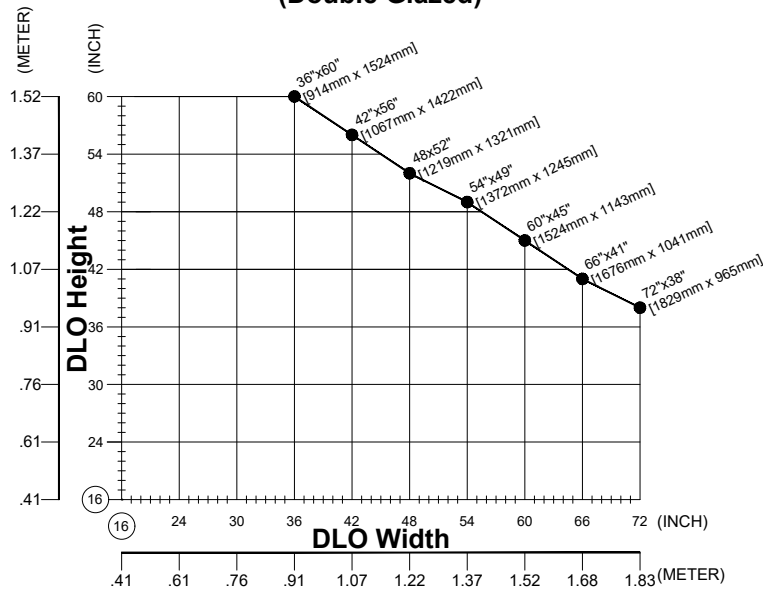
**Window Integration**

**Curtain Wall Integration**

**Storefront Integration**



**BOTTOM HUNG PROJECT IN WITH MULTI-POINT LOCKING HANDLE  
(Double Glazed)**



**Hopper hardware includes the following:**

- MPL handle available in Silver, White, or Black finish
- One multipoint locking handle centered on the top of the sash
- One pair stainless steel 4-Bar Hinges
- Snubber set (as required)
- Glass stop for 1" [25.4mm] glazing
- Interior glazing spline



MPL HANDLE

**Optional extras (must be specified at time of ordering or quotation):**

- Insect screen (fiberglass or aluminum mesh)
- Custodial lock with removable maintenance wrench
- Sash limiters
- Hardware other than standard
- Glazing gasket for 1 1/16" [27mm] IGU



OPTIONAL CUSTODIAL LOCK WITH REMOVABLE MAINTENANCE WRENCH

Charts are based upon an insulating glass unit infill of 1" [25.4mm] overall thickness comprised of 6mm glass/13mm gas fill/6mm glass

Using this chart: Ensure your largest maximum size falls within the above size limitation chart