



Phantom Door

GLAZING INSTRUCTIONS

GENERAL CONSTRUCTION NOTES.....3

PARTS LIST.....4

NARROW STILE DOOR - GLASS AND ANGLE SIZES.....5

MEDIUM STILE DOOR - GLASS AND ANGLE SIZES.....6

WIDE STILE DOOR - GLASS AND ANGLE SIZES7

SURROUND ANGLE PREP & ASSEMBLY.....8

NORTON TAPE APPLICATION.....9

BLACK VINYL (OR FRIT) APPLICATION TO GLASS10

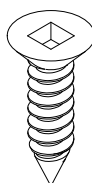
GLAZING.....11

1. These instructions only provide general instructions for glazing pre-assembled door leafs . They provide useful guidelines, but the final shop drawings may include additional details specific to the project. Any conflict or discrepancies must be clarified prior to execution.
2. Materials stored at the job site must be kept in a safe place protected from possible damage by other trades. Stack with adequate separation so materials will not rub together and store off the ground. Cardboard or paper wrapped materials must be kept dry. Check arriving materials for quantity and keep a record of where various materials are stored.
3. All field welding must be done in accordance with CSA guidelines. All aluminum and glass should be shielded from field welding to avoid damage from weld splatter. Results will be unsightly and may be structurally unsound. Advise general contractor and other trades accordingly.
4. Coordinate protection of installed work with general contractor and/or other trades.
5. Coordinate sequence of other trades which affect framing installation with the general contractor (e.g. fire proofing , back up walls, partitions, ceilings, mechanical ducts, HVAC, etc.).
6. General contractor should furnish and guarantee bench marks, off set lines and opening dimensions. These items should be checked for accuracy before proceeding with erection. Make certain that all adjacent substrate construction is in accordance with the contract documents and/or approved shop drawings. If not, notify the general contractor in writing before proceeding with installation because this could constitute acceptance of adjacent substrate construction by others.
7. Isolate all aluminum to be placed directly in contact with masonry or other incompatible materials with a heavy coat of zinc chromate or bituminous paint. Fasteners attaching framing to building structure are typically not provided by Alumicor, nor specified in these instructions due to varying perimeter conditions and job performance requirements. Consult approved shop drawings.
8. Sealant selection is the responsibility of the erector, installer and/or glazing contractor and must be approved by the sealant manufacturer with regard to application and compatibility for its intended use. All sealants must be used in strict accordance with the manufacturer's instructions and applied only by trained personnel to surfaces that have been properly prepared.
9. Sealant must be compatible with all materials with which they have contact, including other sealant surfaces. Consult the sealant manufacturer for recommendations relative to shelf life, compatibility, cleaning of substrate, priming, tooling adhesion, etc. Recommend sealant manufacturer perform adhesion "pull test" at "wet" glazing for quality assurance.
10. All framing members, entrances and other materials are to be installed plumb, level and true with regard to established bench marks, column center lines or other working points established by the general contractor and checked by the erector, installer and/or glazing contractor.
11. Cleaning of exposed aluminum surfaces should be done per FGIA recommendations.
12. Codes governing the design and use of products vary widely. Alumicor does not control the selection of products configurations, operating hardware, or glazing materials, and assumes no responsibility for these considerations. It is the responsibility of the owner, specifier, architect, general contractor and the installer to make these selections in strict conformance with all applicable codes.
13. Check weblink below for any installation instruction updates



10916XX

1-1/4" x 1" x 0.079"
GLASS SURROUND ANGLE
AVAILABLE IN ALL FINISHES



7153101

#10-24 x 3/4" FH
TYPE A SCREW
GLASS SURROUND
ANGLE FASTENER



1/4" x 1/4"

NORTON TAPE
(NOT SUPPLIED BY
TUBELITE/ALUMICOR)



10600XX

CANADIANA DOOR
LEAF GLAZING
POCKET FILLER

REFER TO ALUMICOR CANADIANA ENTRANCE DETAILS AND DOCUMENTS FOR ADDITIONAL INFORMATION ON STANDARD DOOR COMPONENTS, LEAF ASSEMBLY & PREPARATION. THE PHANTOM DOOR IS A CUSTOMIZED GLAZING OPTION FOR THE CANADIANA DOOR LEAF.

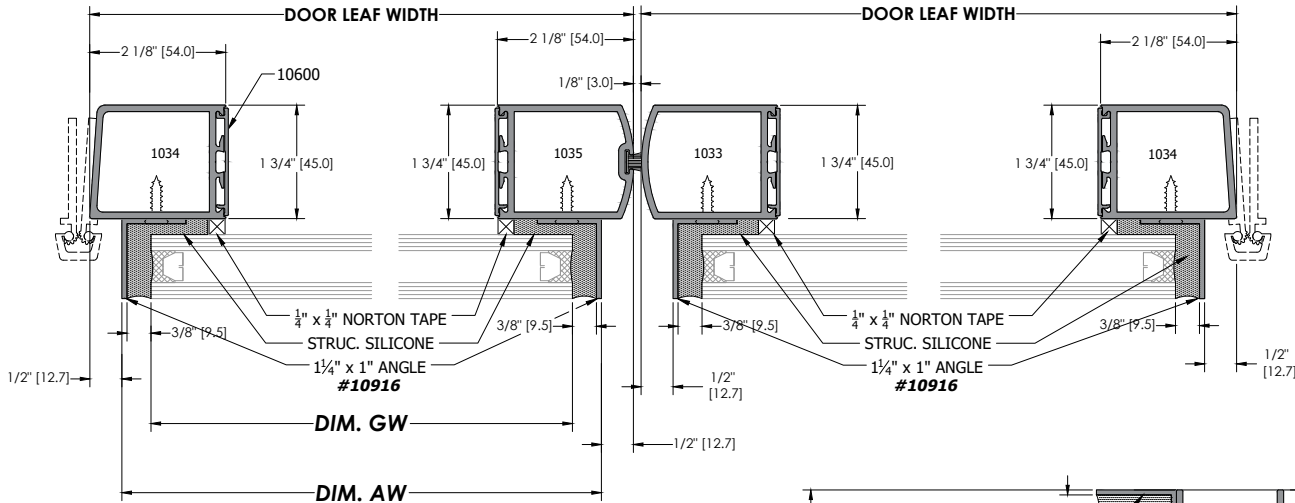
HARDWARE PACKAGES ON PHANTOM DOORS ARE NOT STANDARD.

Narrow Stile Phantom Door (100A)

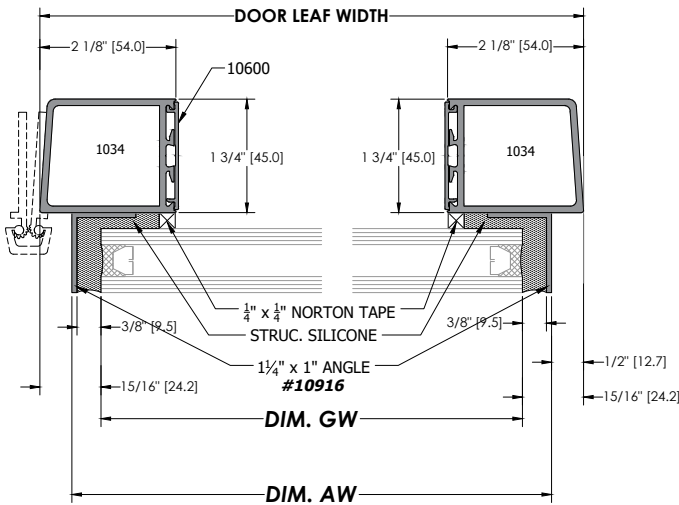
2-1/8" STILES, 2-1/8" HEAD RAIL, 3-7/8" SILL RAIL

CONTINUOUS GEAR HINGES ONLY

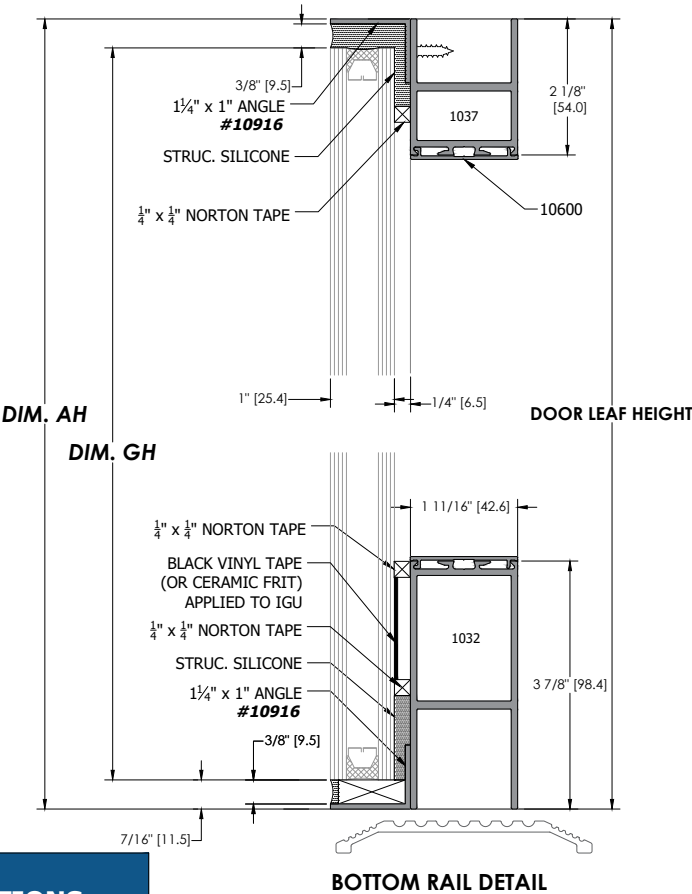
PAIR DOOR



SINGLE DOOR



EXTERIOR HW CANNOT BE MOUNTED ON NARROW STILE PHANTOM DOORS



NARROW STILE PHANTOM DOORS GLASS SURROUND ANGLES AND GLASS SIZE DEDUCTIONS				
EXTERIOR HW	DIM. AW: SURROUND ANGLE WIDTH	DIM. AH: SURROUND ANGLE HEIGHT	DIM. GW: GLASS WIDTH	DIM. GH: GLASS HEIGHT
NONE	LEAF WIDTH minus (-) 1"	LEAF HEIGHT	LEAF WIDTH minus (-) 1-7/8"	LEAF HEIGHT minus (-) 7/8"

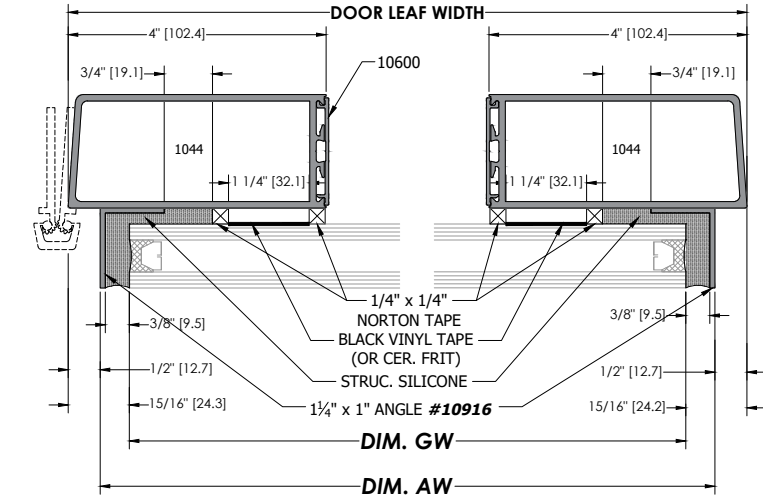
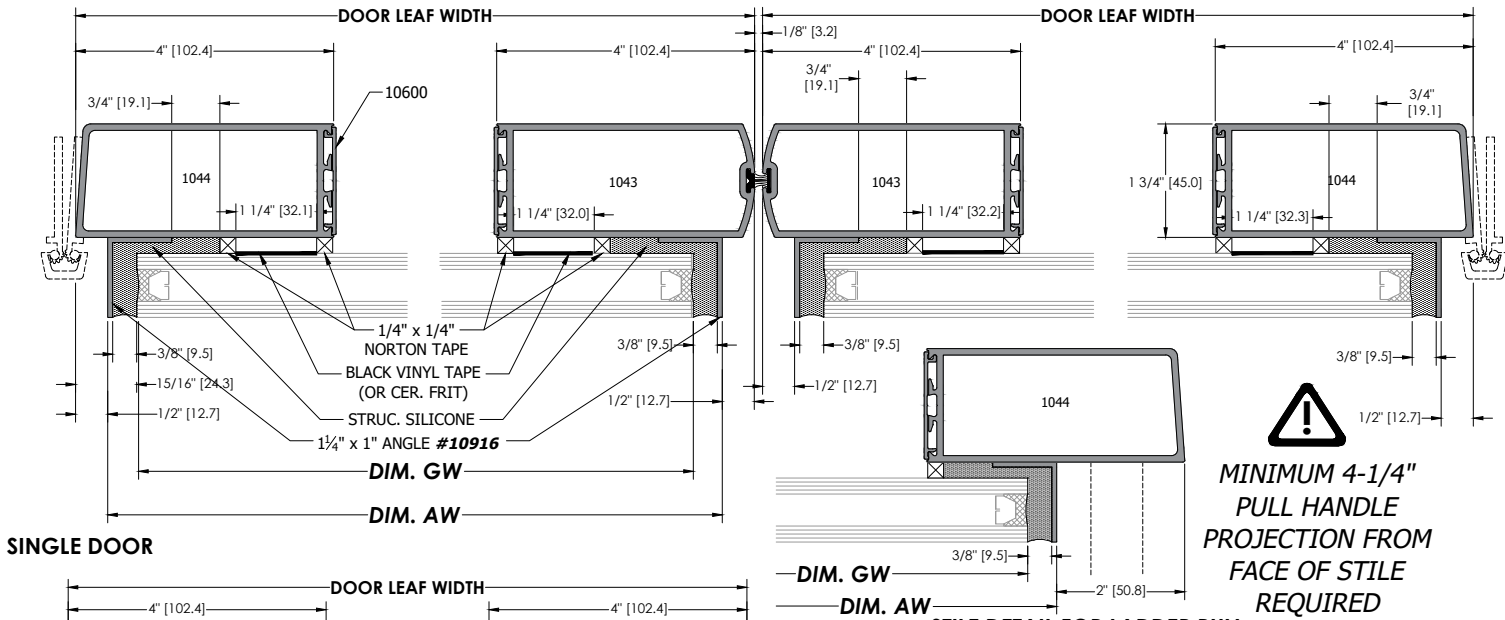
IGUs, VINYL TAPE (OR CERAMIC FRIT) ON IGUS, AND NORTON TAPE ARE NOT SUPPLIED BY ALUMICOR.

Medium Stile Phantom Door (400A)

4" STILES, 3-7/8" HEAD RAIL, 7" SILL RAIL

CONTINUOUS GEAR HINGES ONLY

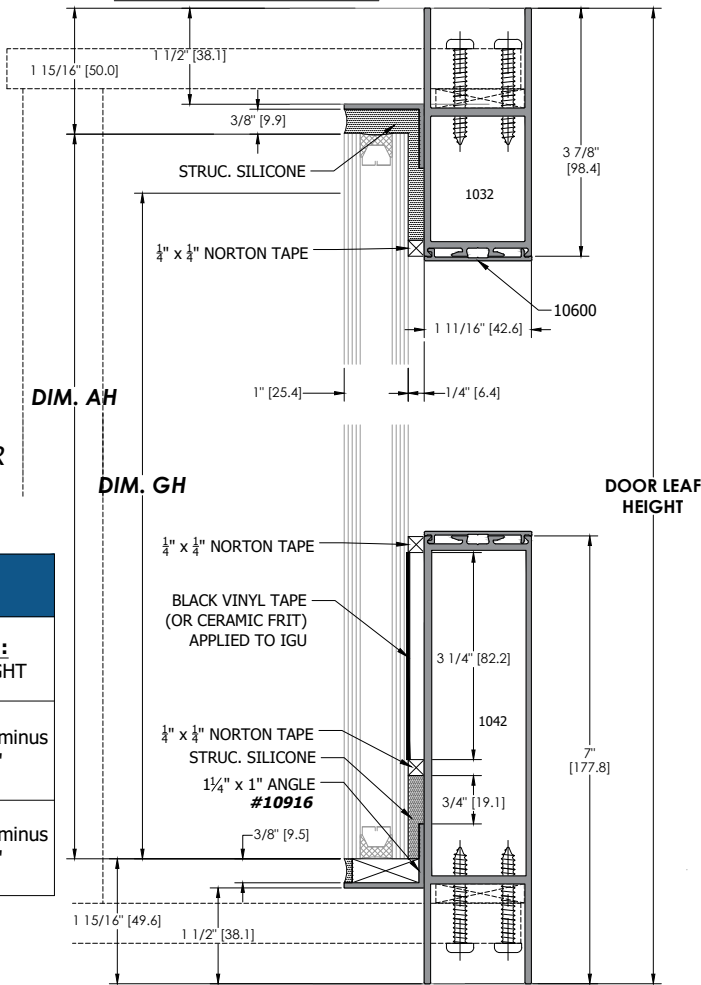
PAIR DOOR



ANGLE/GLASS SETBACKS SHOWN ARE TYPICAL. THE ACTUAL REQUIRED SETBACKS MAY VARY DEPENDING ON THE EXTERIOR HW CONFIGURATION BEING INSTALLED ON THE DOOR. REFER TO THE PROJECT SHOP DRAWINGS FOR SPECIFIC DETAILS.

MEDIUM STILE PHANTOM DOORS				
GLASS SURROUND ANGLES AND GLASS SIZE DEDUCTIONS				
EXTERIOR HW	DIM. AW: SURROUND ANGLE WIDTH	DIM. AH: SURROUND ANGLE HEIGHT	DIM. GW: GLASS WIDTH	DIM. GH: GLASS HEIGHT
FULL LENGTH PULL (MOUNTED TO HEAD AND SILL RAILS)	LEAF WIDTH minus (-) 1"	LEAF HEIGHT minus (-) 3"	LEAF WIDTH minus (-) 1-7/8"	LEAF HEIGHT minus (-) 3-7/8"
LADDER PULL (MOUNTED TO LOCK STILE)	LEAF WIDTH minus (-) 2-1/2"	LEAF HEIGHT minus (-) 1"	LEAF WIDTH minus (-) 3-3/8"	LEAF HEIGHT minus (-) 1-7/8"

IGUs, VINYL TAPE (OR CERAMIC FRIT) ON IGUS, EXTERIOR PULLS AND NORTON TAPE ARE NOT SUPPLIED BY ALUMICOR.

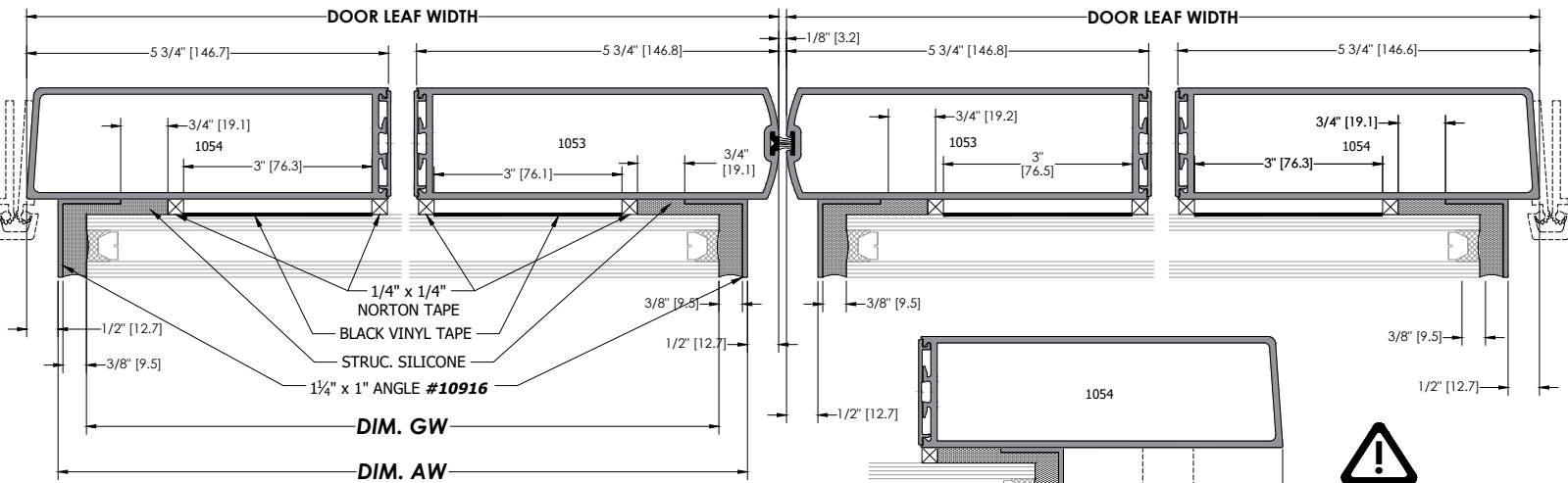


Wide Stile Phantom Door (600A)

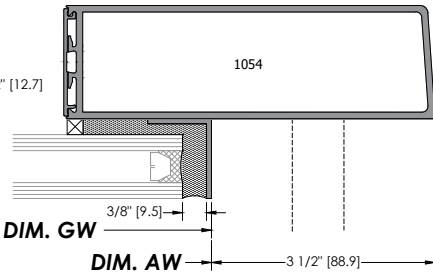
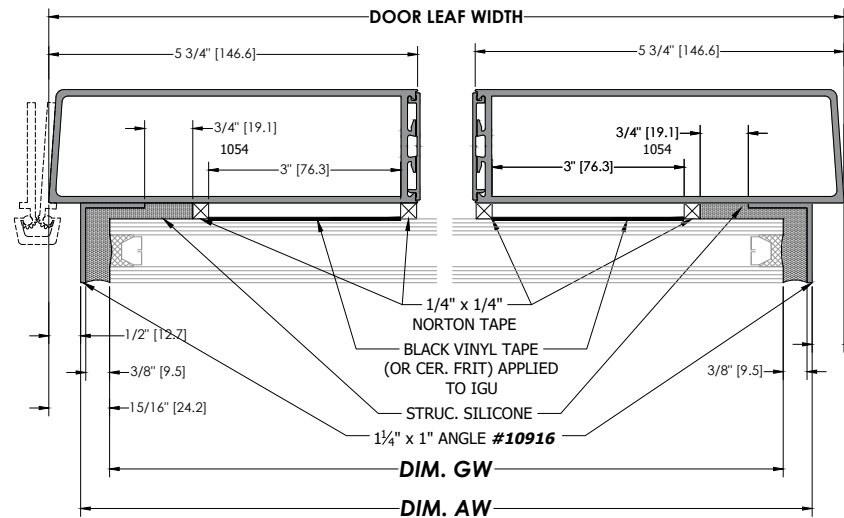
5-3/4" STILES, 5-5/8" HEAD RAIL, 7" SILL RAIL

CONTINUOUS GEAR HINGES ONLY

PAIR DOOR

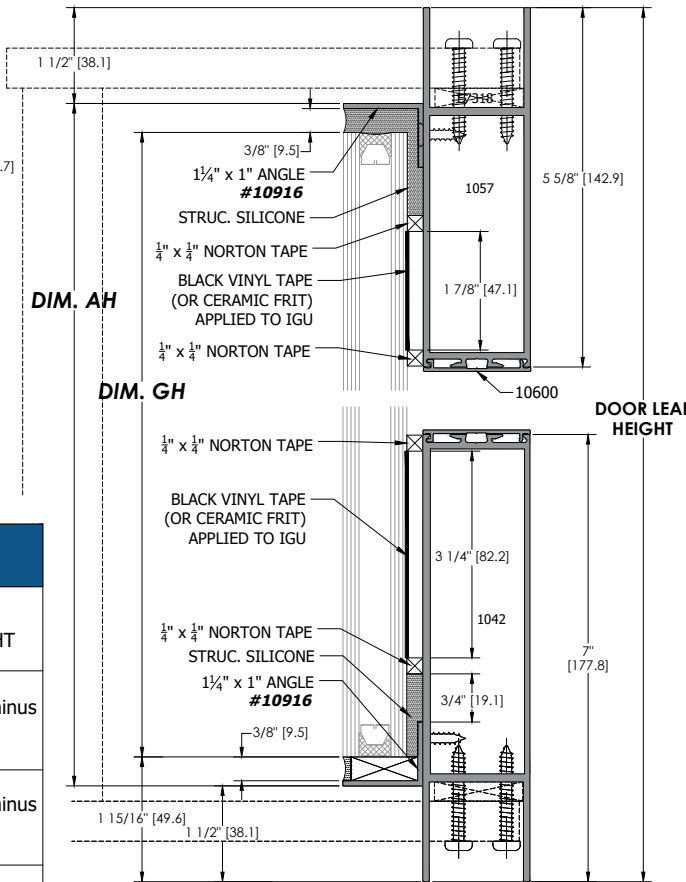


SINGLE DOOR



MINIMUM 4-1/4" PULL HANDLE PROJECTION REQUIRED

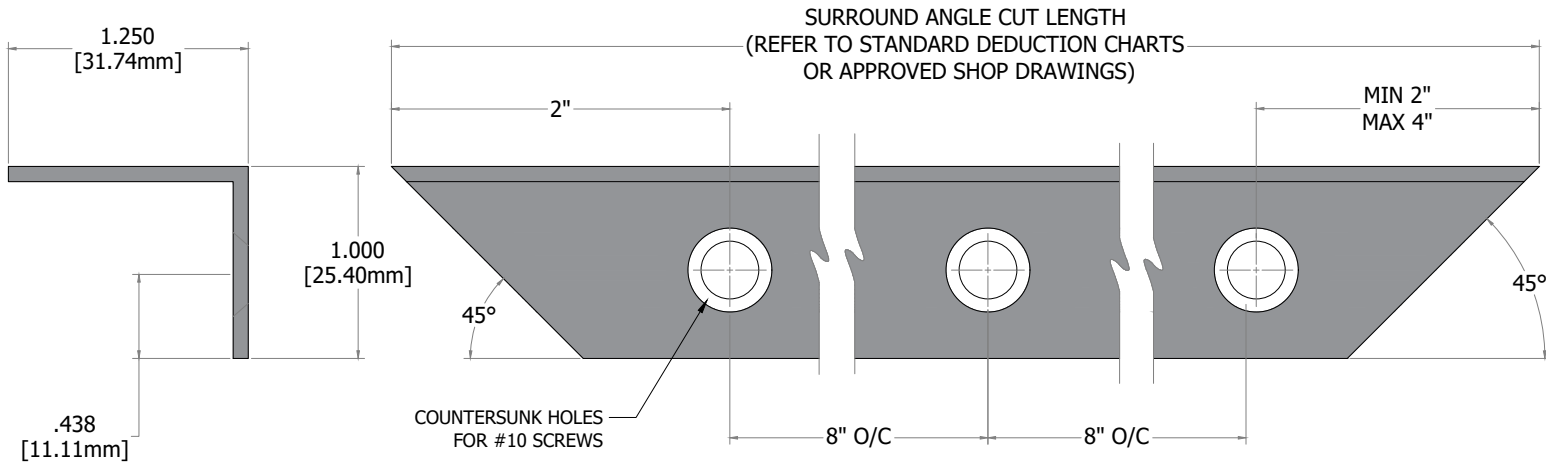
STILE DETAIL FOR PULL/CYLINDER/PANIC TRIM



ANGLE/GLASS SETBACKS SHOWN ARE TYPICAL. THE ACTUAL REQUIRED SETBACKS MAY VARY DEPENDING ON THE EXTERIOR HW CONFIGURATION BEING INSTALLED ON THE DOOR. REFER TO THE PROJECT SHOP DRAWINGS FOR SPECIFIC DETAILS.

WIDE STILE PHANTOM DOORS GLASS SURROUND ANGLES AND GLASS SIZE DEDUCTIONS				
EXTERIOR HW	DIM. AW: SURROUND ANGLE WIDTH	DIM. AH: SURROUND ANGLE HEIGHT	DIM. GW: GLASS WIDTH	DIM. GH: GLASS HEIGHT
FULL LENGTH PULL (MOUNTED TO HEAD AND SILL RAILS)	LEAF WIDTH minus (-) 1"	LEAF HEIGHT minus (-) 3"	LEAF WIDTH minus (-) 1-7/8"	LEAF HEIGHT minus (-) 3-7/8"
LADDER PULL (MOUNTED TO LOCK STILE)	LEAF WIDTH minus (-) 2-1/2"	LEAF HEIGHT minus (-) 1"	LEAF WIDTH minus (-) 3-3/8"	LEAF HEIGHT minus (-) 1-7/8"
PANIC TRIM/CYLINDER TRIM ON LOCK STILE	LEAF WIDTH minus (-) 4"	DEPENDS ON PULL TYPE USED	LEAF WIDTH minus (-) 4-7/8"	DEPENDS ON PULL TYPE USED

1-1/4" x 1" x 0.079" Glass Surround Angle Prep. Extrusion #10916XX



Glass Surround Angle Assembly

STEP 1

- Ensure all work surfaces are clean and free of any grit or debris that might damage the surface of the door leaf. Lay the assembled leaf on the work bench with the exterior side facing up.
- Clean the exterior face of the door leaf using IPA 2 wipe method.
- Place the mitred and countersunk angles onto the face of the door leaf and space the angles from the ends of the door leaf following the standard deduction chart or the approved shop drawings. Temporarily clamp the angles to the door leaf if necessary.
- Fasten the stop adaptors to the face of the door leaf with #10-24 x 3/4" Flat Head (**7153101**) self drilling screws. Match drill pilot holes into door leaf if there is any difficulty driving the self-drilling screws into the door leaf. **See FIG. 3**
- Ensure the mitred corners are flush and the angles are square and parallel relative to the door leaf.

NOTE: IPA 2 wipe method-dispense Iso-Propanol Alcohol (IPA) on a cloth, gently wipe the area. Immediately use another lint-free clean cloth to wipe the area dry.

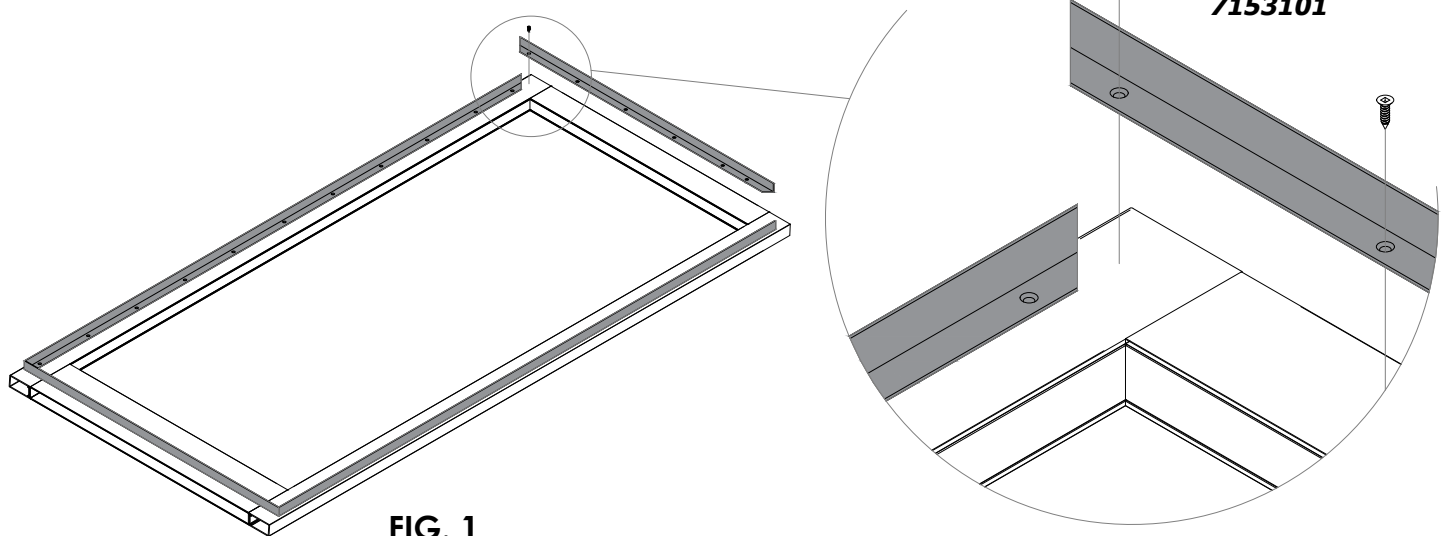


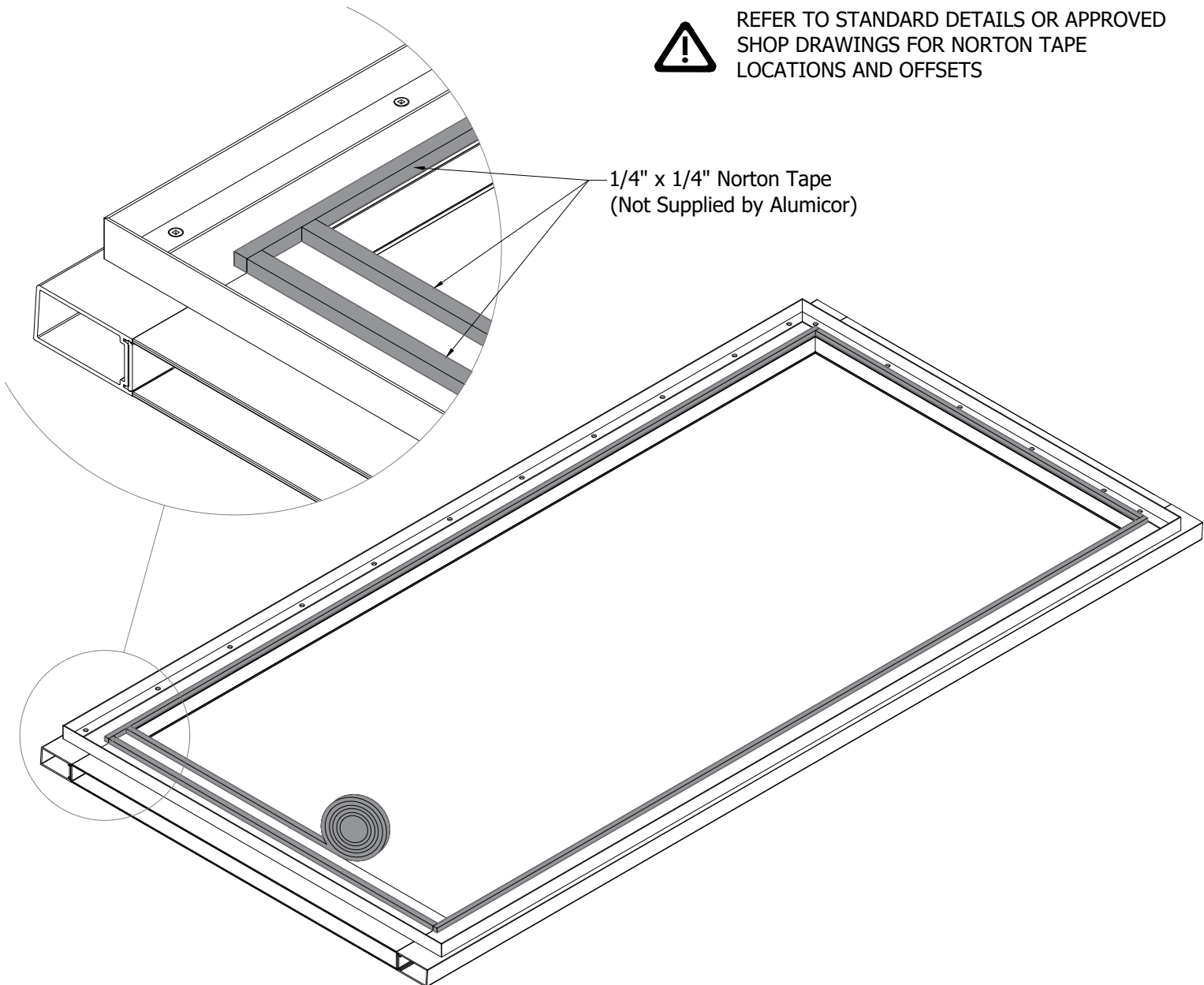
FIG. 1

STEP 1

- Clean the exterior face of the assembled door leaf using IPA 2 wipe method.
- Apply 1/4" x 1/4" Norton tape continuously in the locations on the leaf as shown in the standard details or approved shop drawings. Ensure the tape is applied straight and perpendicular to the door leaf.
- Butt the corners together with the horizontal norton tape running between the vertical tape and butting into the side of the vertical.
- Apply a thin film of neutral cure silicone across the tape joints. This is only to close the tape joints. It is not used for a seal.



REFER TO STANDARD DETAILS OR APPROVED SHOP DRAWINGS FOR NORTON TAPE LOCATIONS AND OFFSETS





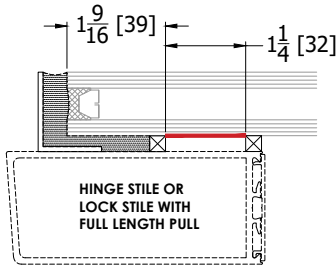
ALUMICOR/TUBELITE HIGHLY RECOMMENDS THAT A GLASS FILM PROFESSIONAL CUT AND APPLY THE VINYL TO THE GLASS. DO NOT ATTEMPT TO APPLY HTV VINYL TO THE GLASS WITH A HEAT GUN UNLESS EXPERIENCED AND COMPETENT. ALUMICOR/TUBELITE DOES NOT SUPPLY VINYL TAPE.

Wet Application Method

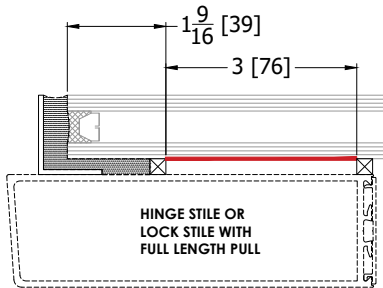
STEP 1

- Check the glass identification sticker for the correct glass orientation.
- Using a glass cleaning solution, thoroughly clean and dry the interior glass faces around the perimeter of the glass where the black vinyl tape will be applied.
- In a clean spray bottle, prepare a solution of water containing 2% liquid soap
- Evenly spray the solution on to the glass surface which will receiving the vinyl tape.
- Remove the backing paper from the vinyl tape and place the self advinyl tape in position on the glass (refer to approved details and shop drawings)
- Using a small squeegee, carefully work around the face of the tape to remove any wrinkles or bubbles from the tape. Any imperfections in the tape application will be visible through the door.
- Clean off the surface of the vinyl and allow it to dry.

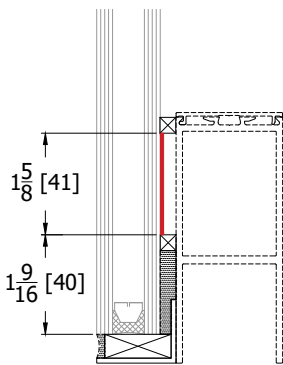
TYPICAL MEDIUM STILE TAPE OR FRIT SIZE/OFFSET



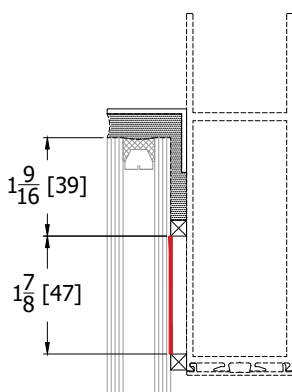
TYPICAL WIDE STILE TAPE SIZE/OFFSET



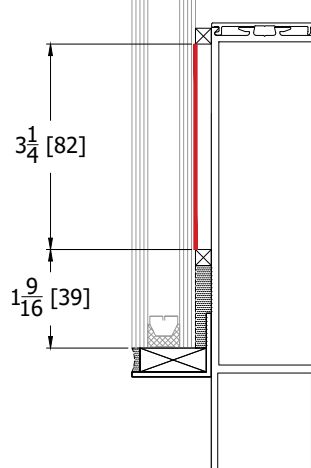
NARROW SILL RAIL



WIDE HEAD RAIL

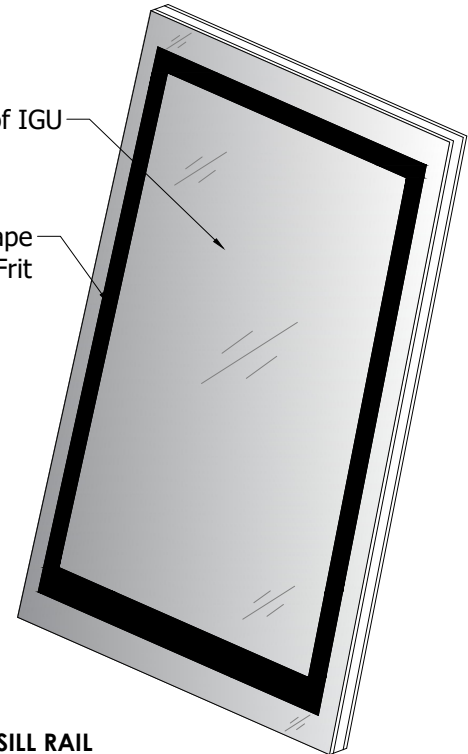


MED/WIDE SILL RAIL



Interior Face of IGU

Black Vinyl Tape
or Ceramic Frit



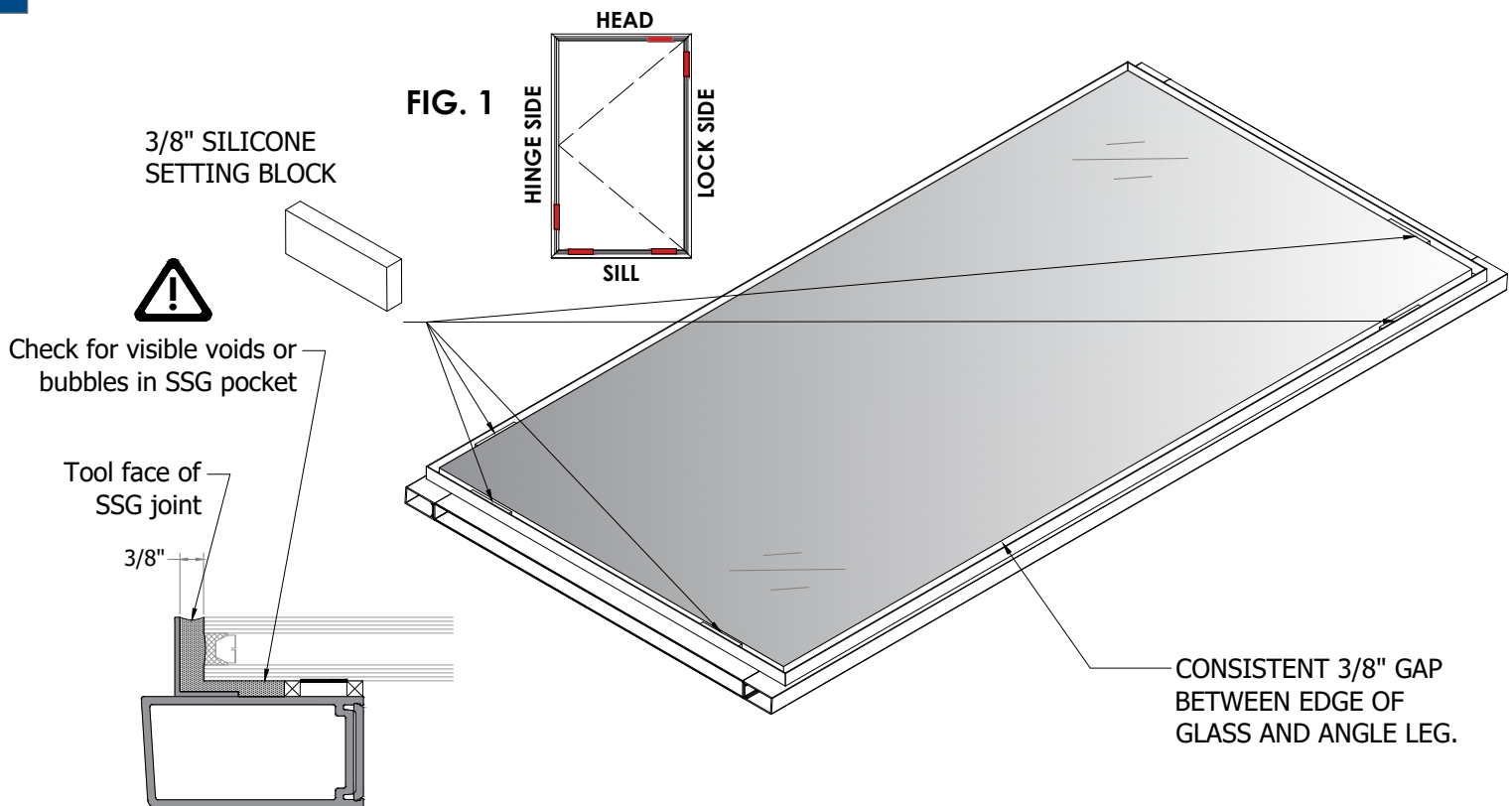
REFER TO STANDARD DETAILS OR APPROVED PROJECT SHOP DRAWINGS FOR VINYL SIZE & OFFSETS

STEP 1

- Clean glass edges with a razor knife to clean off any excess silicone.
- Check for any glass damage (chips, shells, blemishes or any imperfections around the spacer bar seal.)
- Check glass identification sticker for the correct glass orientation.
- Clean interior glass face edge 2" around the entire perimeter using IPA 2-wipe method
- Remove the paper covers on the top surfaces of the Norton Tape already applied to the door leaf.

STEP 2

- Carefully lift the glass unit and place it inside the surround angles onto the Norton Tape. Do not move glass excessively as it may disturb the tape corner seals. Glass must be set square relative to the surround angles with a consistent 3/8" gap between the glass and the angle leg on all four sides.
- Place the 3/8" setting blocks into the gaps between the angle and glass approx. 4-6" from each corner. **See Fig. 1.**
- Ensuring the glass surface is protected, place weights evenly spaced on the glass surface. This ensures a smooth uninterrupted path to pump the structural sealant into the space between sash and glass while adding enough pressure for the glass to be properly seated.
- Using the structural sealing pump, perform the appropriate testing (snap test and butterfly).



STEP 3

- If the sealant testing is approved, apply sealant into the void between the glass and the surround angles. Ensure no air pockets are forming in the pocket sealant.
- Check entire glass surface sealant edge with a flashlight for any air pockets visible through the glass. If air pockets are detected fill with sealant and re-tool the edge.
- Tool the 3/8" face joint between the angle and glass.
- Let the structural silicone sealant cure before handling the door leaf. Follow sealant manufacturer's recommended cure time before moving door leaf.