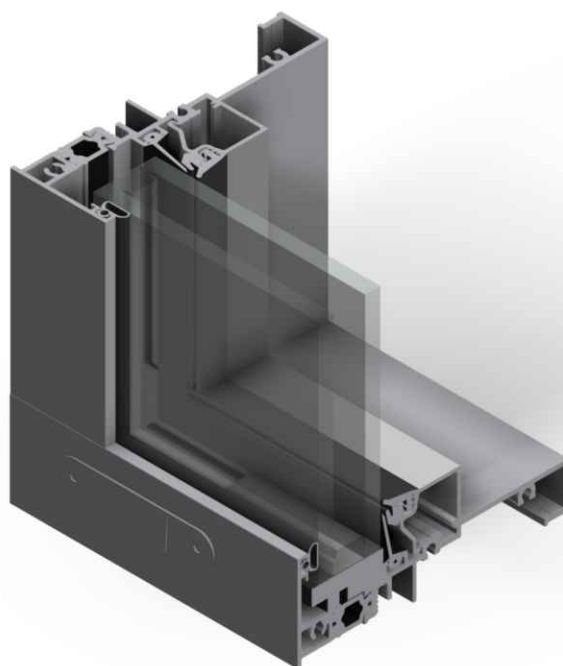




1900 SERIES FRAMING

DOUBLE AND TRIPLE GLAZED APPLICATION

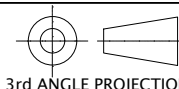


Parts & Details Package



THIS DRAWING AND THE INFORMATION CONTAINED
HEREIN IS PROPRIETARY TO ALUMICOR AND SHALL
NOT BE REPRODUCED, COPIED OR DISCLOSED IN WHOLE
OR IN PART OR USED FOR MANUFACTURE OR
FOR ANY PURPOSE WITHOUT THE
WRITTEN PERMISSION OF ALUMICOR

DESIGN STATE:



3rd ANGLE PROJECTION

IMPERIAL

CHECK 1st OF

APPROVED

YES ☐

NO ☐

Table of Contents

Drawing Name	Drawing No.
System Components	1900-1
Key Elevation	1900-2
Section Details-DOUBLE GLAZED	1900-3
Section Details with Out-swing Vent-DOUBLE GLAZED	1900-4
Section Details with In-swing Vent-DOUBLE GLAZED	1900-5
Section Details-TRIPLE GLAZED	1900T-3
Section Details with Out-swing Vent-TRIPLE GLAZED	1900T-4
Section Details with In-swing Vent-TRIPLE GLAZED	1900T-5
Perimeter Frame Assembly	1900-6
Intermediate Frame Assembly	1900-7
Sealant at Sill/Head Frame and Perimeter Jamb Frame	1900-8
Sealant at Sill/Head Frame and Vertical Intermediate Frame	1900-9
Sealant at Vertical Inter./Jamb and Horizontal Intermediate	1900-10
Sill Prep.-DOUBLE GLAZED	1900-11
Jamb Prep.-DOUBLE GLAZED	1900-12
Head Prep.-DOUBLE GLAZED	1900-13
Horizontal Intermediate Prep.-DOUBLE GLAZED	1900-14
Vertical Intermediate Prep.-DOUBLE GLAZED	1900-15
Sill Prep. -TRIPLE GLAZED	1900T-11
Jamb Prep.-TRIPLE GLAZED	1900T-12
Head Prep.-TRIPLE GLAZED	1900T-13
Horizontal Intermediate Prep.-TRIPLE GLAZED	1900T-14
Vertical Intermediate Prep.-TRIPLE GLAZED	1900T-15
Glass Stop Cut Prep.	1900-GS
OUT-SWING Vent Adaptor Prep.	1900-AD-OUT
IN-SWING Vent Adaptor Prep.	1900-AD-IN
Intermediate PVC Vent Adaptor	1990303

DESCRIPTION:

TABLE OF CONTENTS

PRODUCT:

1900 SERIES FRAMING
DOUBLE & TRIPLE GLAZED

DATE:

JAN. 2018

SCALE:

N.T.S.

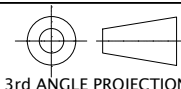
DWG:

1900-1



THIS DRAWING AND THE INFORMATION CONTAINED
HEREIN IS PROPRIETARY TO ALUMICOR AND SHALL
NOT BE REPRODUCED, COPIED OR DISCLOSED IN WHOLE
OR IN PART OR USED FOR MANUFACTURE OR
FOR ANY PURPOSE WITHOUT THE
WRITTEN PERMISSION OF ALUMICOR

DESIGN STATE:



3rd ANGLE PROJECTION

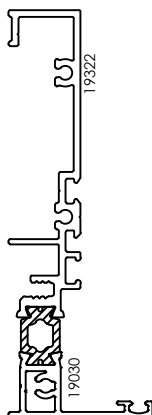
IMPERIAL

CHECK 1st OF

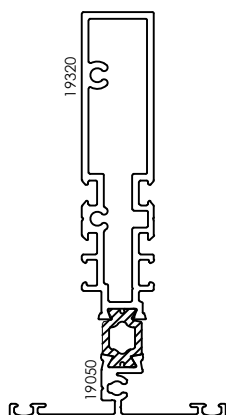
APPROVED

YES ☐

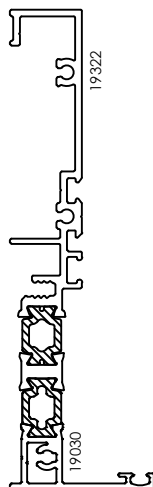
NO ☐



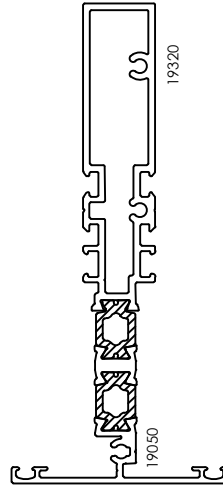
19002
4 1/4" Rolled
Perimeter Frame
Double Glazed



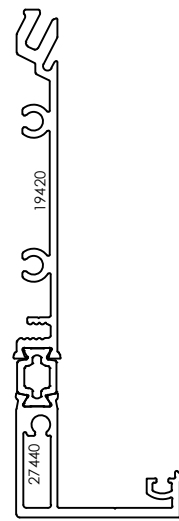
19003
4 1/4" Rolled
Intermediate Frame
Double Glazed



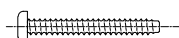
19032
5" Rolled
Perimeter Frame
Triple Glazed



19033
5" Rolled
Intermediate Frame
Triple Glazed



19635
Head/Jamb
Receptor
Double Glazed



7243101
#8 x 1 3/8" Pan Head
Self Tapping Screw



7249101
#8 x 1 1/2" Pan Head
Self Drilling Screw



2760703
Air/Water
Seal Gasket



1462003
Perimeter Bulb
Gasket



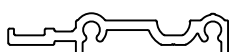
18410
Top Load
Spline Gasket



1980203
Air Seal
Gasket



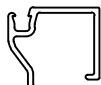
1476203
7/16" x 1 1/8" EPDM
Setting Block



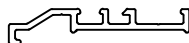
19211
Spigot



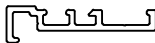
5056001
Shear Pin



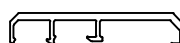
19650
Glass Stop



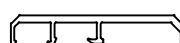
19602
Open-Out
Vent Adaptor



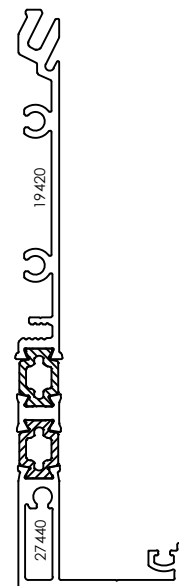
19603
Open-In
Vent Adaptor



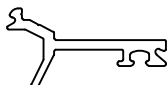
1990103
PVC Vent Adaptor
1980103
24" PVC Spacer



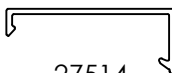
1990303
Vent Adaptor
Triple Glazed
Intermediate



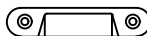
19309
Head/Jamb
Receptor
Triple Glazed



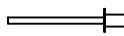
19440
Interior Trim
Adaptor



27514
Interior Receptor
Cover Cap



11601
Weep Hole
Cover



72001
Rivet
1/8" x 1/8" x 1"

DESCRIPTION:

SYSTEM COMPONENTS

PRODUCT:

1900 SERIES FRAMING

DATE:

JAN. 2018

SCALE:

N.T.S.

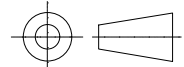
DWG:

1900-1



THIS DRAWING AND THE INFORMATION CONTAINED
HEREIN IS PROPRIETARY TO ALUMICOR AND SHALL
NOT BE REPRODUCED, COPIED OR DISCLOSED IN WHOLE
OR IN PART OR USED FOR MANUFACTURE OR
FOR ANY PURPOSE WITHOUT THE
WRITTEN PERMISSION OF ALUMICOR

DESIGN STATE:



3rd ANGLE PROJECTION

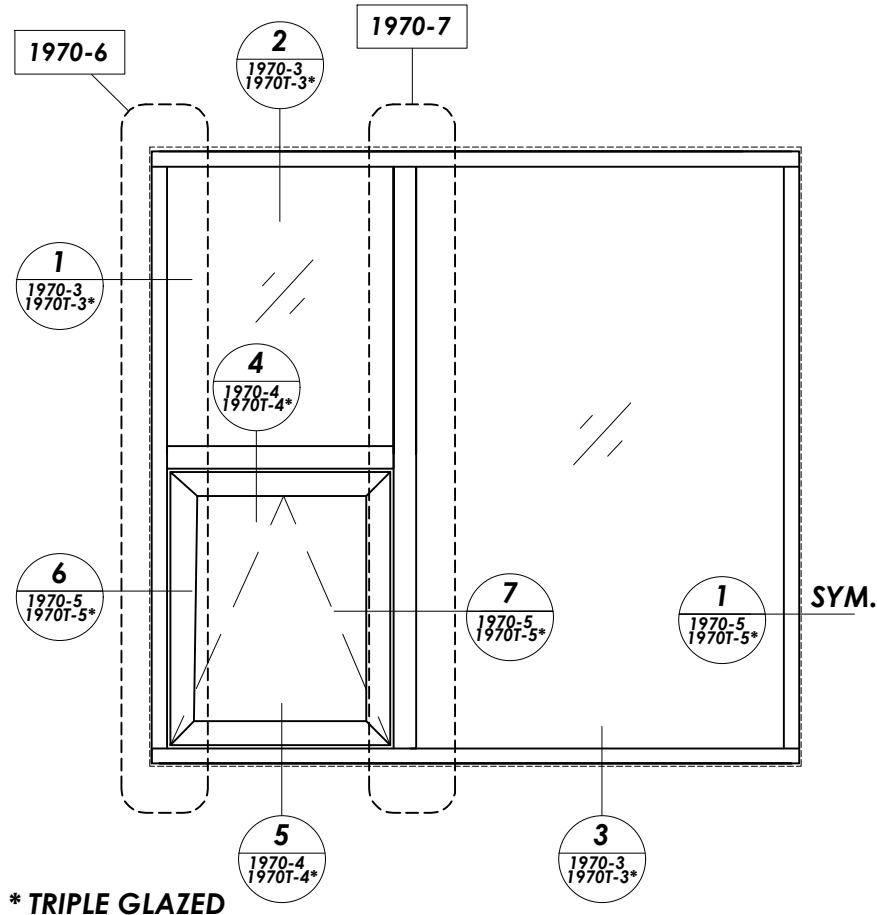
IMPERIAL

CHECK 1st OF

APPROVED

YES ☐

NO ☐



KEY ELEVATION

SCALE N.T.S.

**HORIZONTAL PERIMETER
FRAMES RUN THROUGH**

DESCRIPTION:

KEY ELEVATION

PRODUCT:

1900 SERIES FRAMING
DOUBLE GLAZED

DATE:

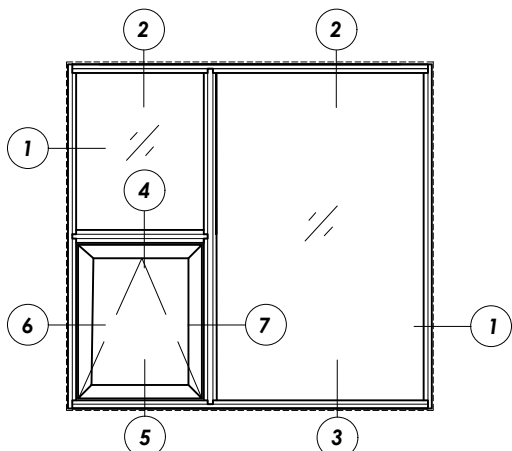
JAN. 2018

SCALE:

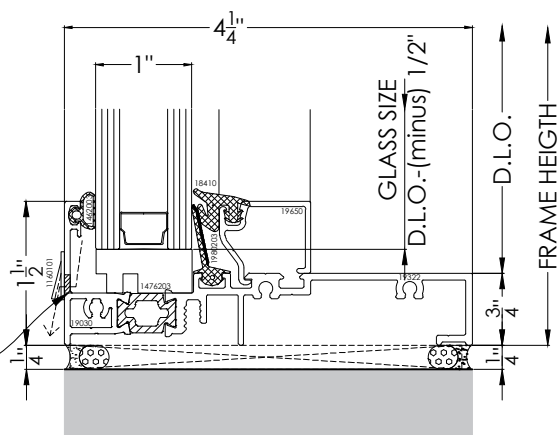
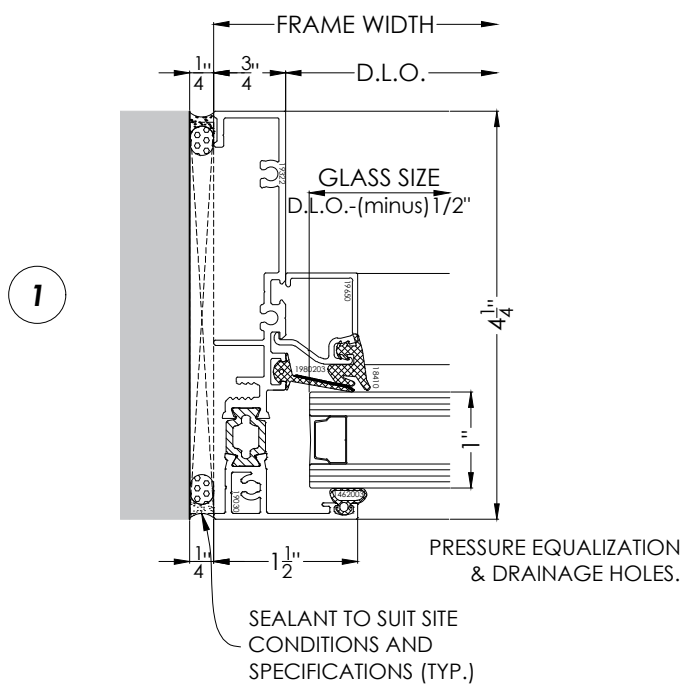
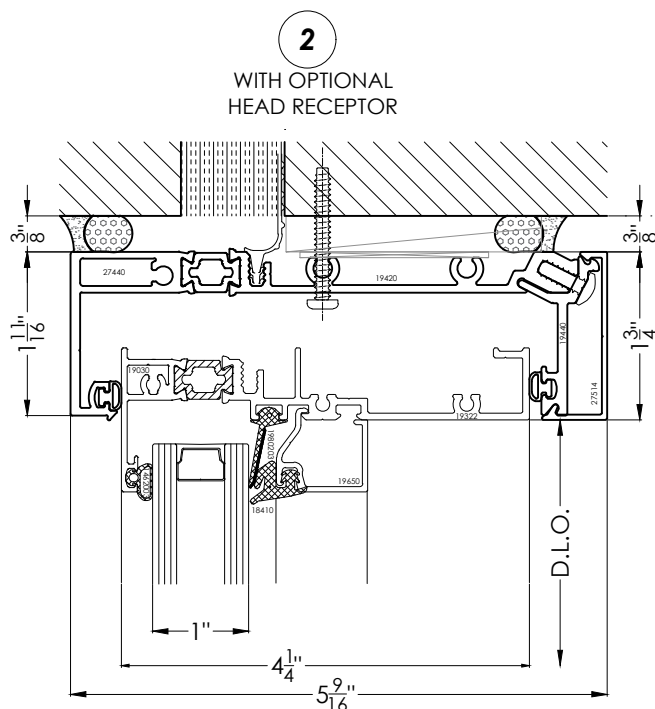
N.T.S.

DWG:

1990-2



KEY ELEVATION
SCALE N.T.S.



DESCRIPTION:

TYP. PLAN & SECTION DETAILS

PRODUCT:

1900 SERIES FRAMING
DOUBLE GLAZED

DATE:

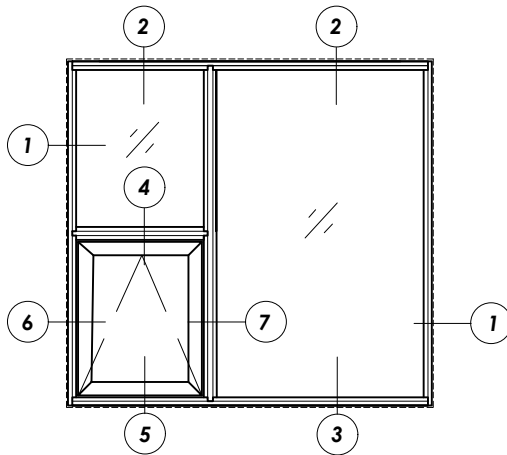
JAN. 2018

SCALE:

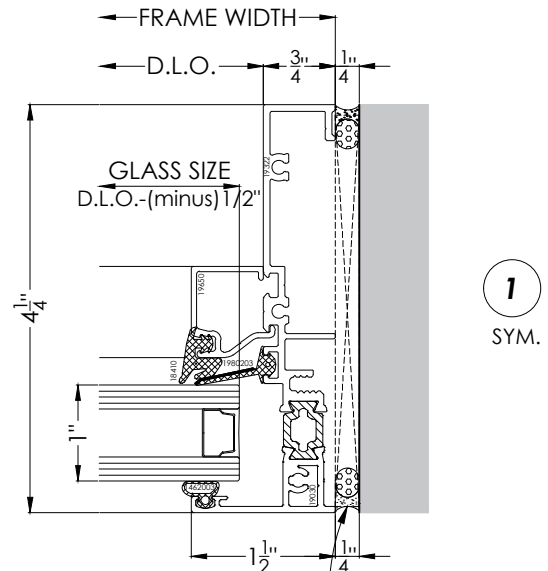
N.T.S.

DWG:

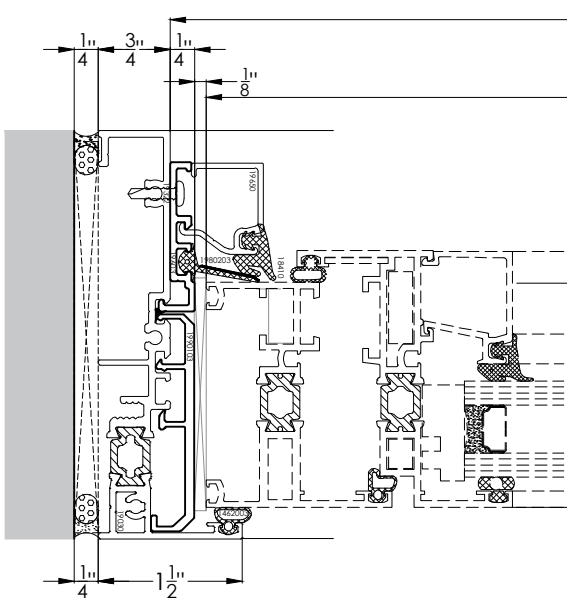
1900-3



KEY ELEVATION
SCALE N.T.S.

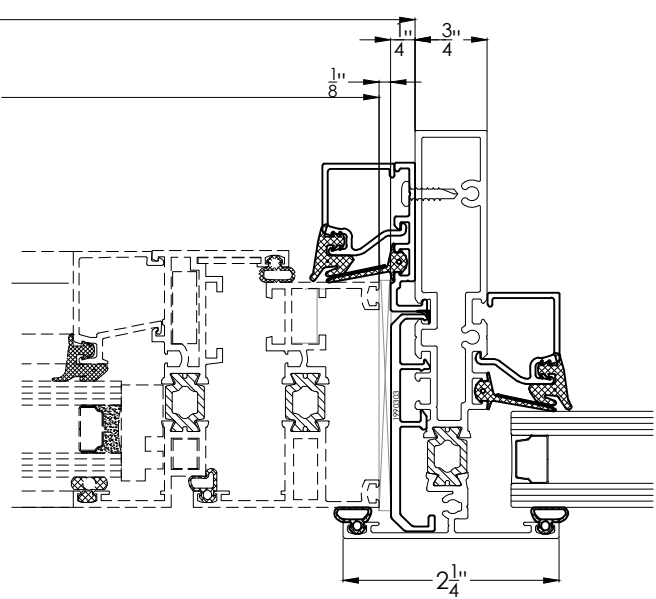


SEALANT TO SUIT SITE
CONDITIONS AND
SPECIFICATIONS (TYP.)



6

IN-SWING VENT



7

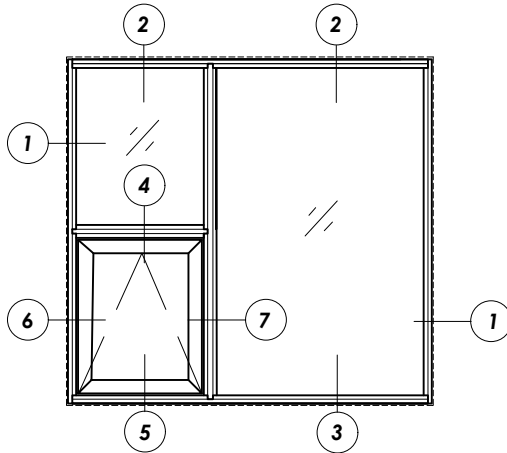
IN-SWING VENT

DESCRIPTION:
TYP. PLAN & SECTION DETAILS
WITH IN-SWING VENT

PRODUCT:
1900 SERIES FRAMING
DOUBLE GLAZED

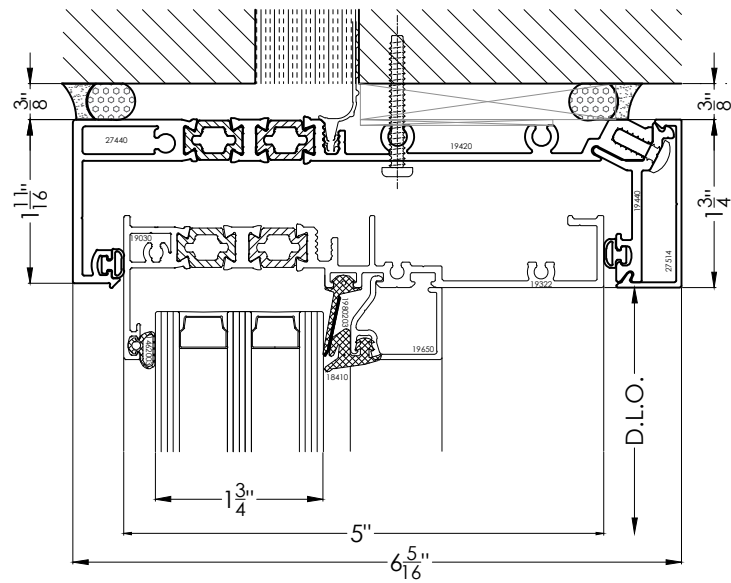
DATE:
JAN. 2018
SCALE:
N.T.S.

DWG:
1900-5

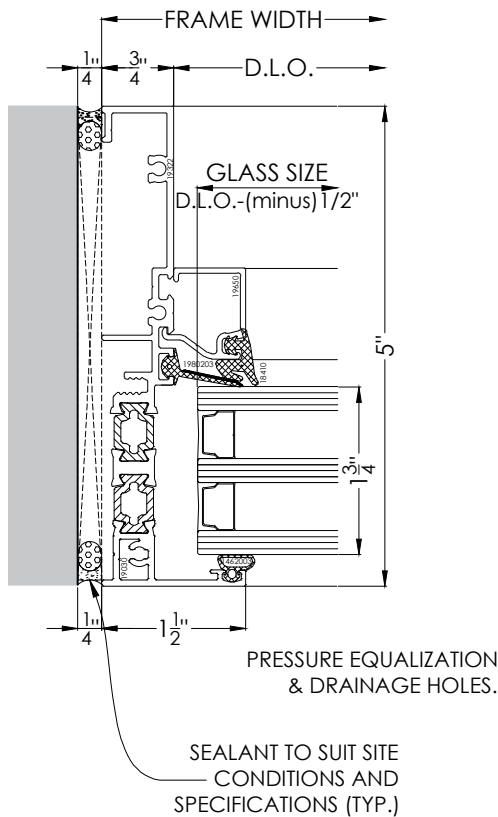


KEY ELEVATION
SCALE N.T.S.

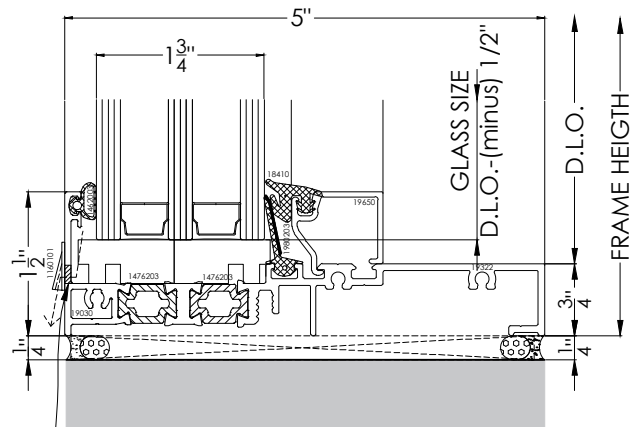
2
WITH OPTIONAL
HEAD RECEPTOR



1



3



DESCRIPTION:

TYP. PLAN & SECTION DETAILS

PRODUCT:

1900 SERIES FRAMING
TRIPLE GLAZED

DATE:

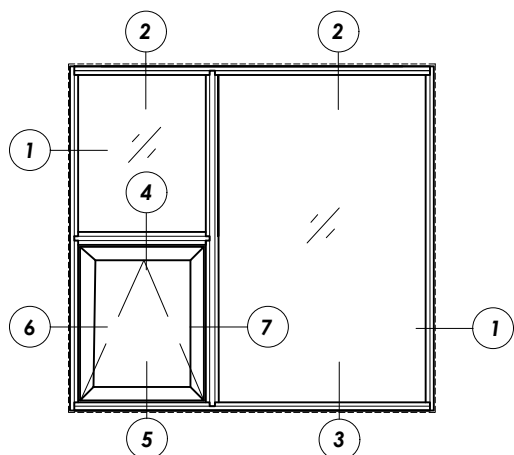
JAN. 2018

SCALE:

N.T.S.

DWG:

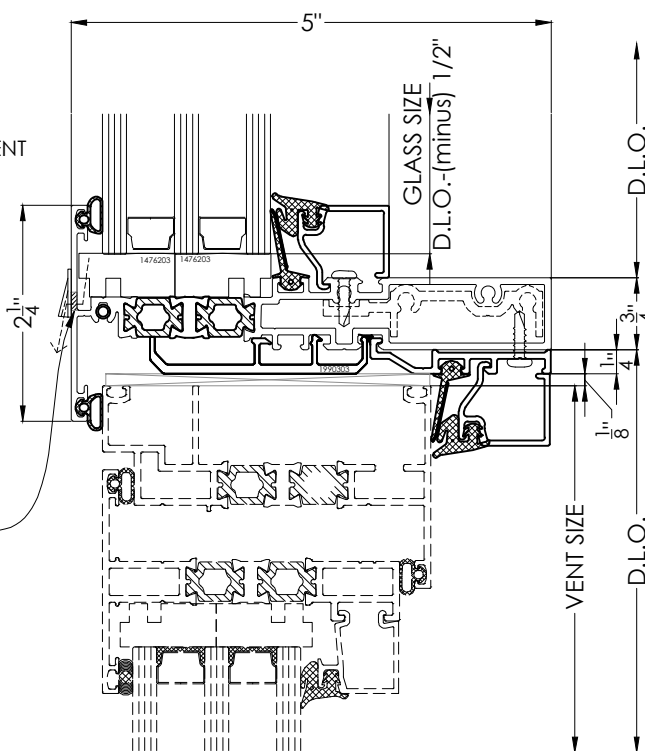
1900T-3



KEY ELEVATION
SCALE N.T.S.

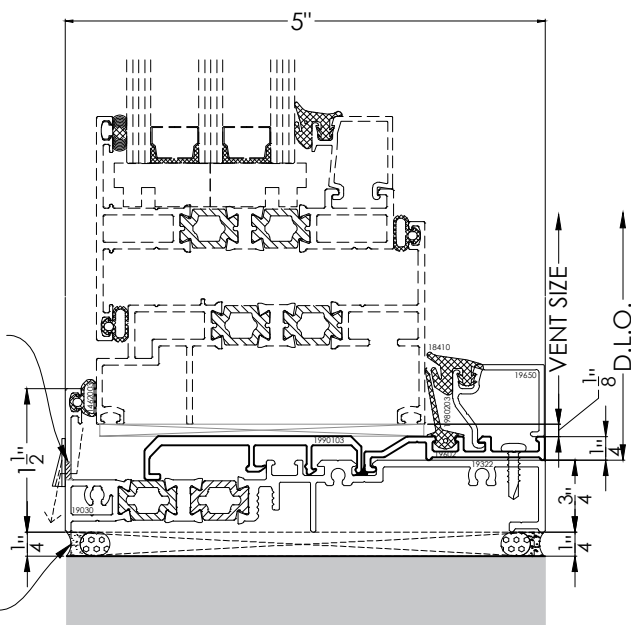
4
OUT-SWING VENT

PRESSURE EQUALIZATION
& DRAINAGE HOLES



PRESSURE EQUALIZATION
& DRAINAGE HOLES.

SEALANT TO SUIT SITE
CONDITIONS AND
SPECIFICATIONS (TYP.)



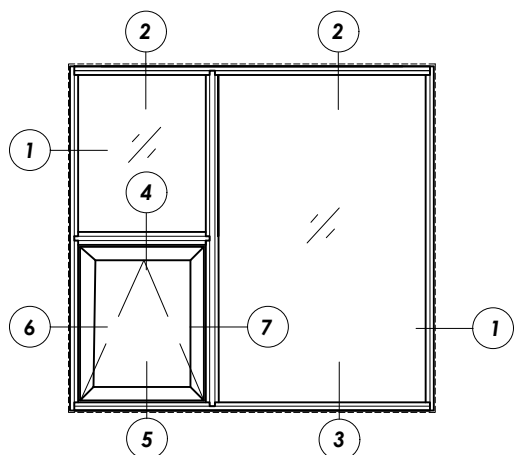
5
OUT-SWING VENT

DESCRIPTION:
**TYP. PLAN & SECTION DETAILS
WITH OUT-SWING VENT**

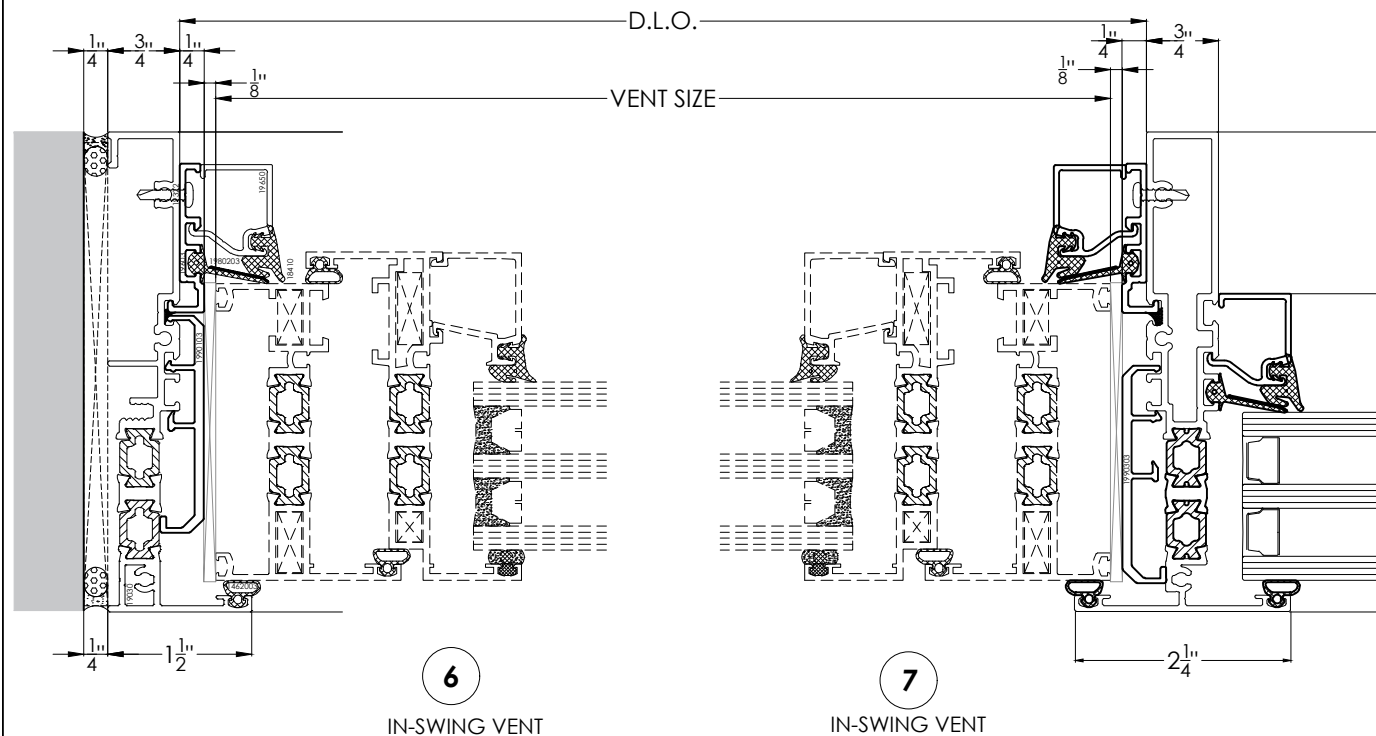
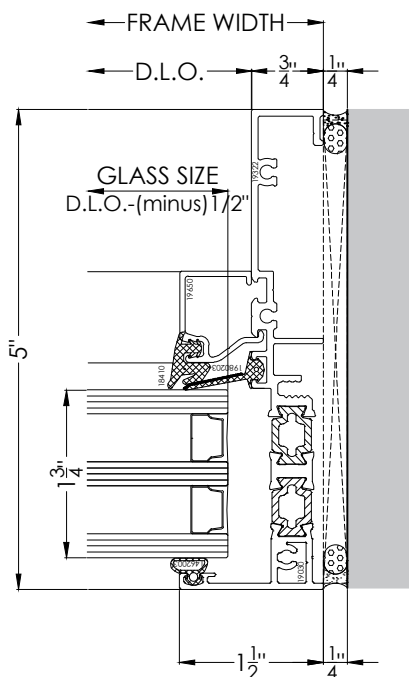
PRODUCT:
**1900 SERIES FRAMING
TRIPLE GLAZED**

DATE:
JAN. 2018
SCALE:
N.T.S.

DWG:
1900T-4



KEY ELEVATION
SCALE N.T.S.

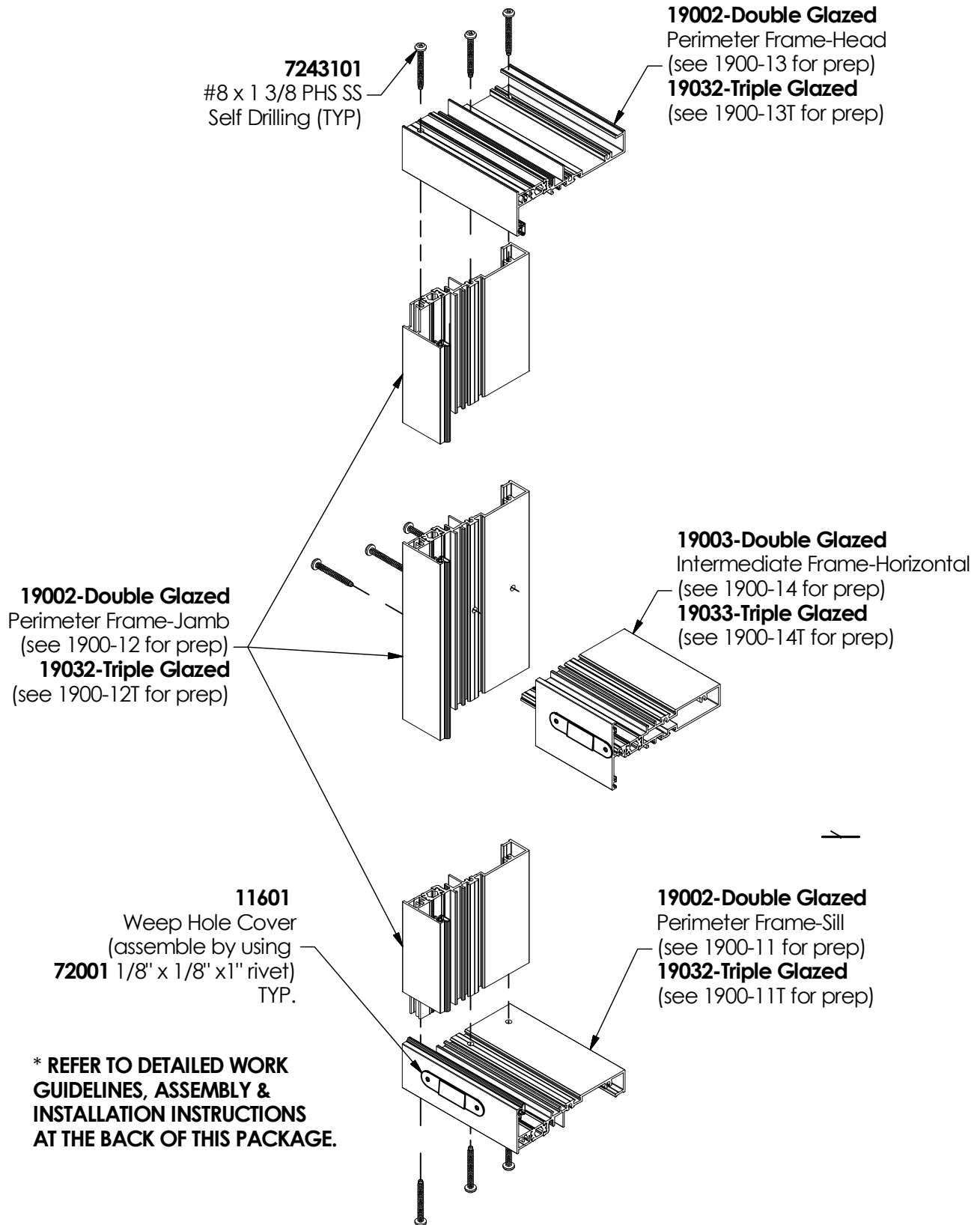


DESCRIPTION:
TYP. PLAN & SECTION DETAILS
WITH IN-SWING VENT

PRODUCT:
1900 SERIES FRAMING
TRIPLE GLAZED

DATE:
JAN. 2018
SCALE:
N.T.S.

DWG:
1900T-5



DESCRIPTION:

PERIMETER FRAME ASSEMBLY

PRODUCT:

1900 SERIES FRAMING
DOUBLE GLAZED

DATE:

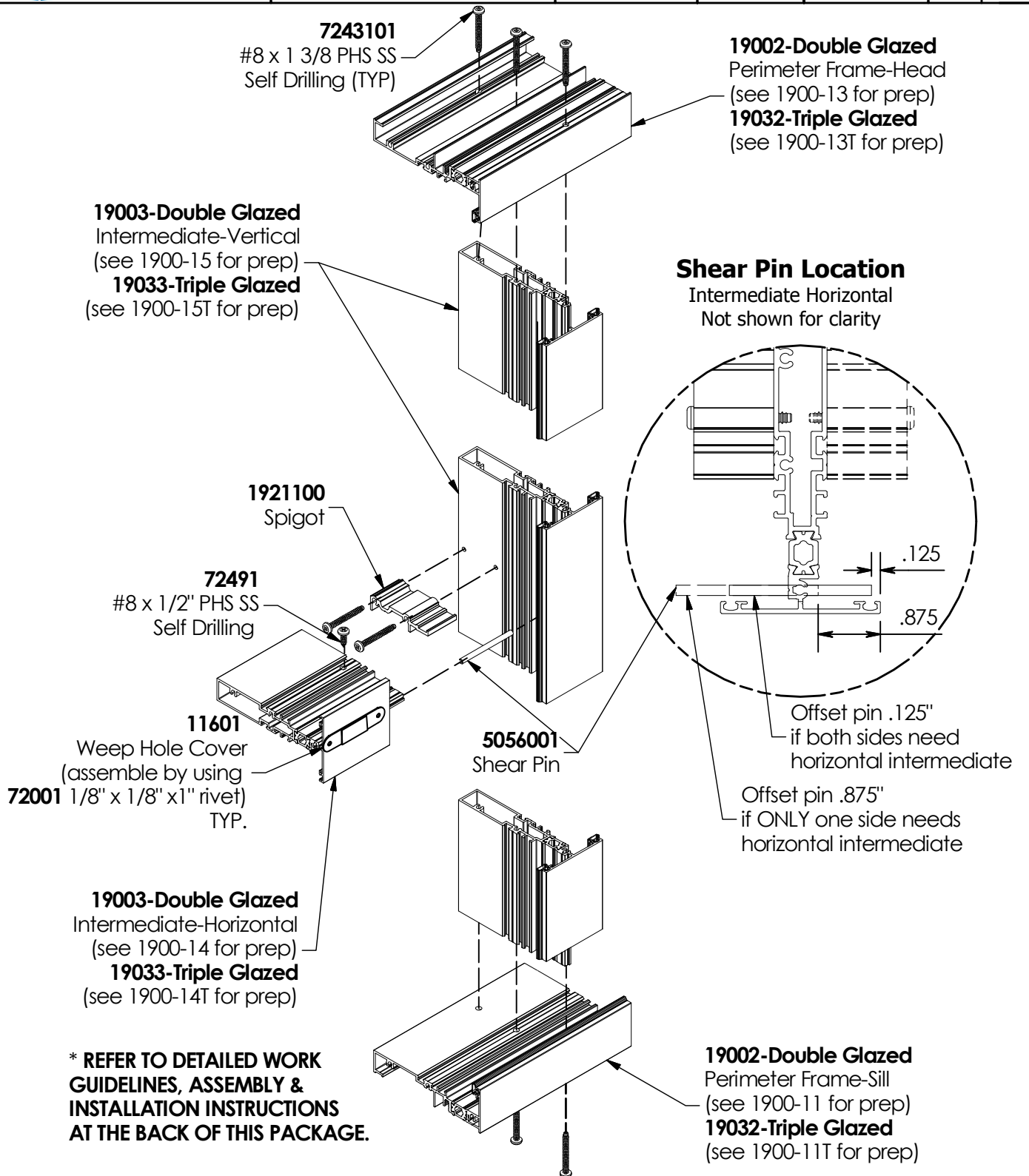
OCTOBER 2016

SCALE:

N.T.S.

PART #:

1900-6



DESCRIPTION:

INTERMEDIATE FRAME
ASSEMBLY

PRODUCT:

1900 SERIES FRAMING
DOUBLE GLAZED

DATE:

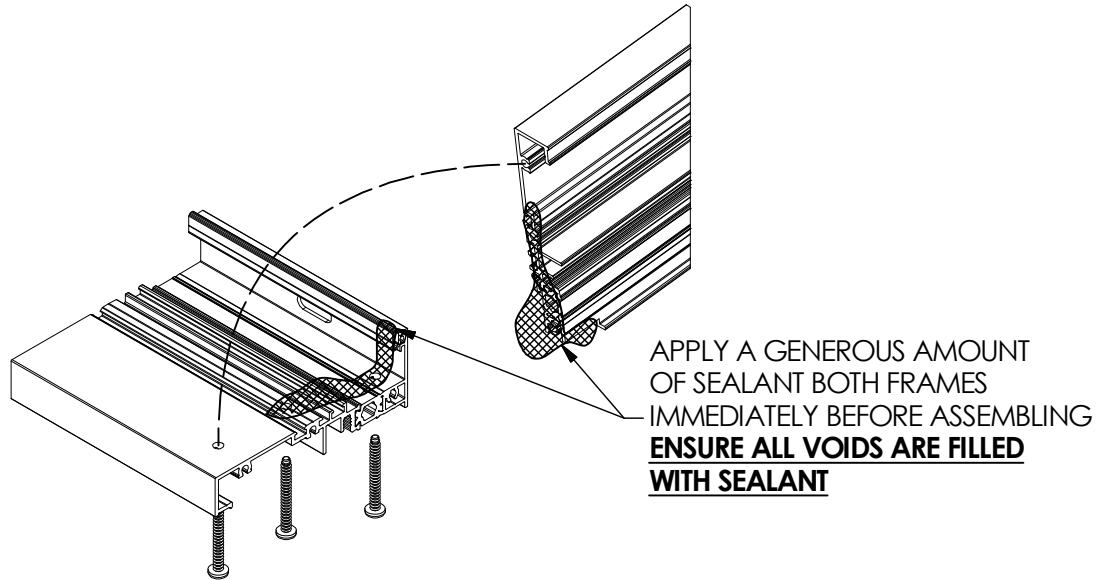
OCTOBER 2016

SCALE:

N.T.S.

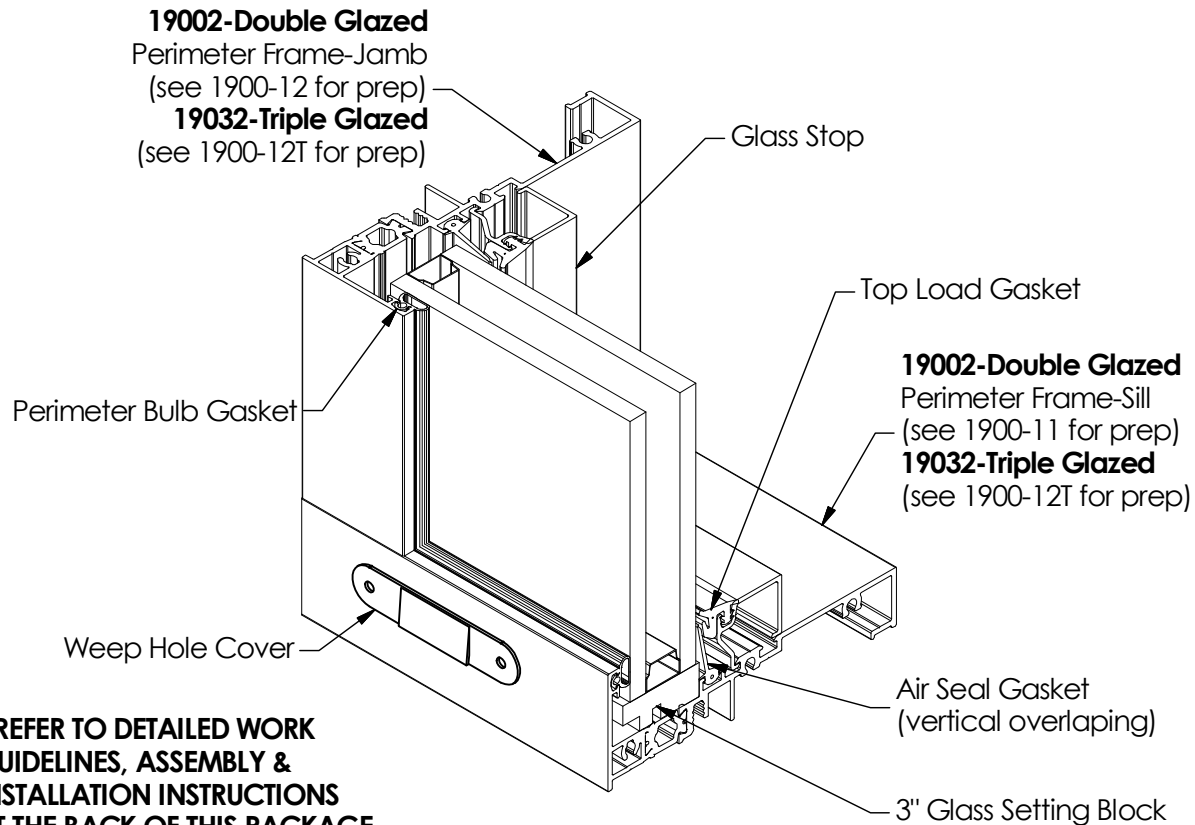
PART #:

1900-7



SEALANT AT SILL/HEAD AND JAMB

ROTATED FOR CLARITY



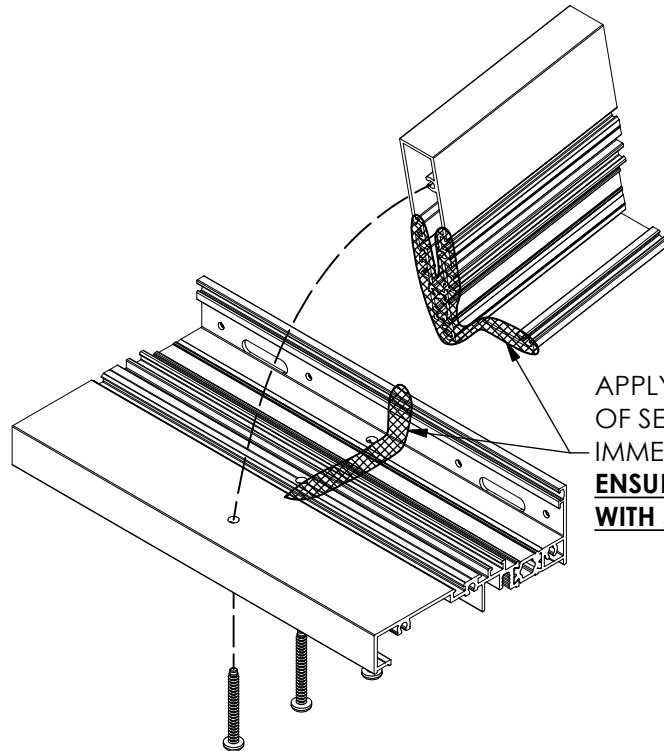
*** REFER TO DETAILED WORK
GUIDELINES, ASSEMBLY &
INSTALLATION INSTRUCTIONS
AT THE BACK OF THIS PACKAGE.**

DESCRIPTION:
SEALANT AT SILL/HEAD AND
JAMB

PRODUCT:
1900 SERIES FRAMING
DOUBLE GLAZED

DATE:
OCTOBER 2016
SCALE:
N.T.S.

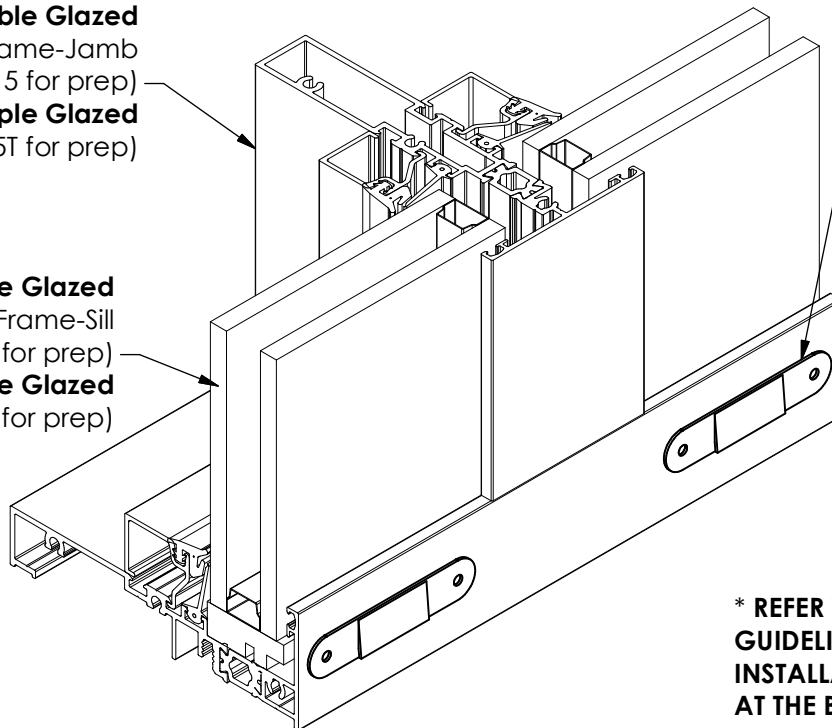
PART #:
1900-8



SEALANT AT SILL/HEAD AND VERTICAL INTERMEDIATE
ROTATED FOR CLARITY

19002-Double Glazed
Perimeter Frame-Jamb
(see 1900-15 for prep)
19032-Triple Glazed
(see 1900-15T for prep)

19002-Double Glazed
Perimeter Frame-Sill
(see 1900-11 for prep)
19032-Triple Glazed
(see 1900-11T for prep)



11601
Weep Hole Cover
(assemble by using
72001 1/8" x 1/8" x 1" rivet)
TYP.

*** REFER TO DETAILED WORK
GUIDELINES, ASSEMBLY &
INSTALLATION INSTRUCTIONS
AT THE BACK OF THIS PACKAGE.**

DESCRIPTION:

**SEALANT AT SILL/HEAD AND
VERTICAL INTERMEDIATE**

PRODUCT:

**1900 SERIES FRAMING
DOUBLE GLAZED**

DATE:

OCTOBER 2016

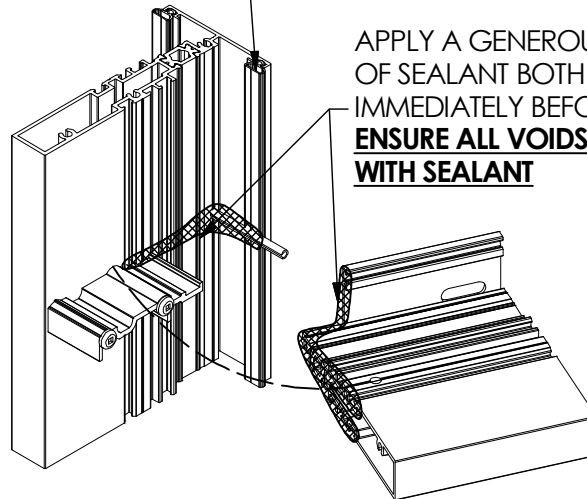
SCALE:

N.T.S.

PART #:

1900-9

Joint sealant on exterior gasket.
Vertical runs through.



APPLY A GENEROUS AMOUNT
OF SEALANT BOTH FRAMES
IMMEDIATELY BEFORE ASSEMBLING
**ENSURE ALL VOIDS ARE FILLED
WITH SEALANT**

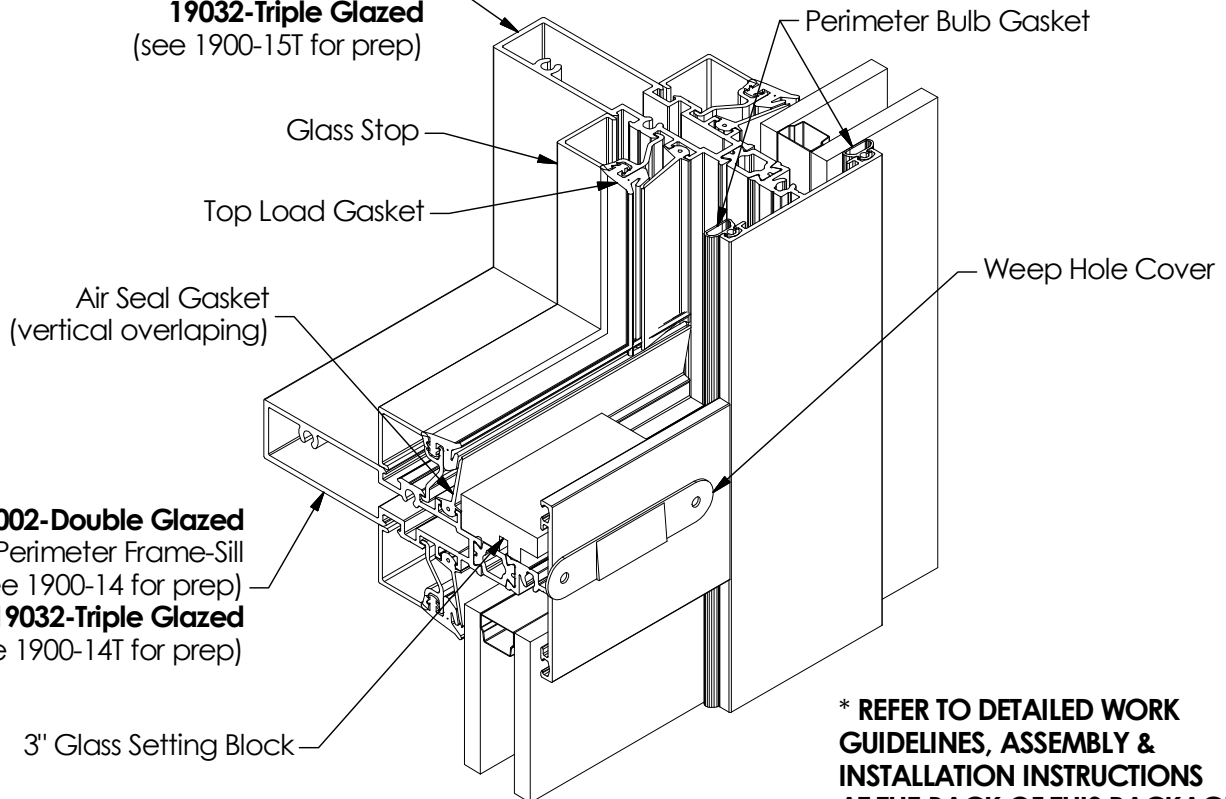
SEALANT AT VERTICAL INTER./JAMB AND HORIZONTAL INTERMEDIATE ROTATED FOR CLARITY

19002-Double Glazed

Perimeter Frame-Jamb
(see 1900-15 for prep)

19032-Triple Glazed

(see 1900-15T for prep)



*** REFER TO DETAILED WORK
GUIDELINES, ASSEMBLY &
INSTALLATION INSTRUCTIONS
AT THE BACK OF THIS PACKAGE.**

DESCRIPTION:
**SEALANT AT INTERMEDIATES
AND JAMB**

PRODUCT:
**1900 SERIES FRAMING
DOUBLE GLAZED**

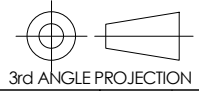
DATE:
OCTOBER 2016
SCALE:
N.T.S.

PART #:
1900-10



THIS DRAWING AND THE INFORMATION CONTAINED
HEREIN IS PROPRIETARY TO ALUMICOR AND SHALL
NOT BE REPRODUCED, COPIED OR DISCLOSED IN WHOLE
OR IN PART OR USED FOR MANUFACTURE OR
FOR ANY PURPOSE WITHOUT THE
WRITTEN PERMISSION OF ALUMICOR

DESIGN STATE:

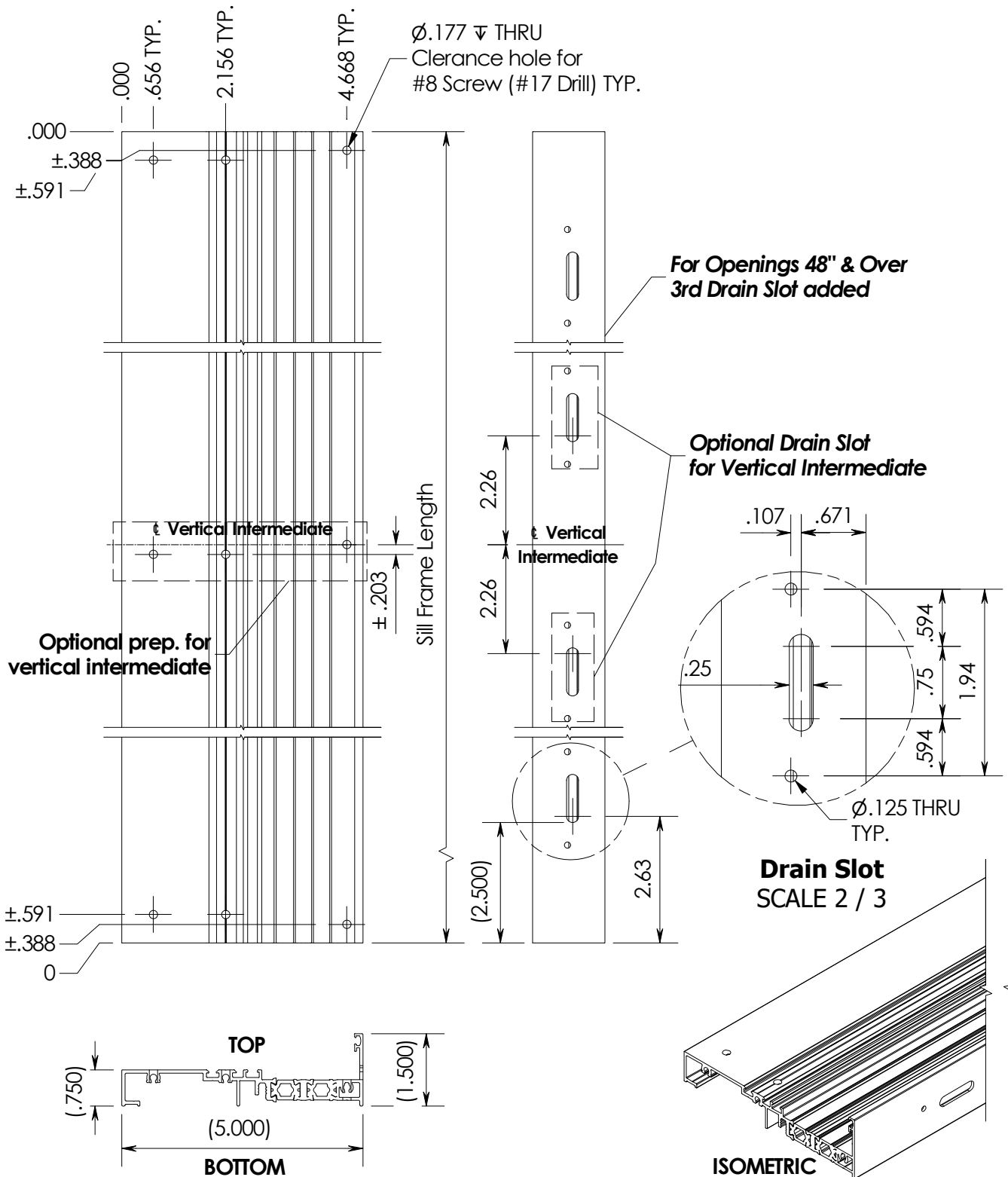


IMPERIAL

CHECK 1st of

APPROVED

YES ☐ NO ☐



DESCRIPTION:

SILL PREP - TGL

PRODUCT:

1900 SERIES FRAMING TRIPLE
GLAZED

DATE:

OCTOBER 2016

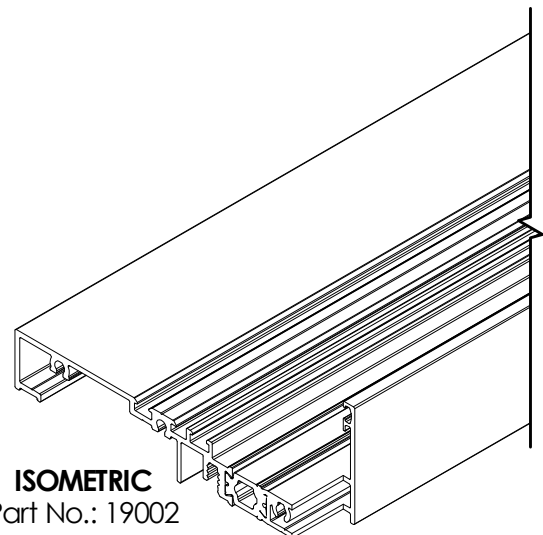
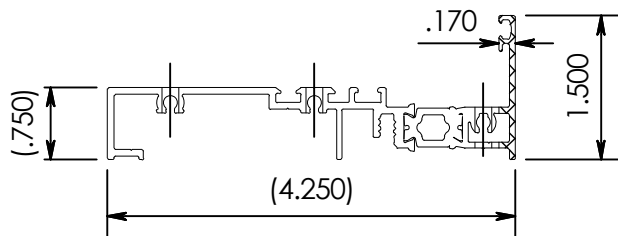
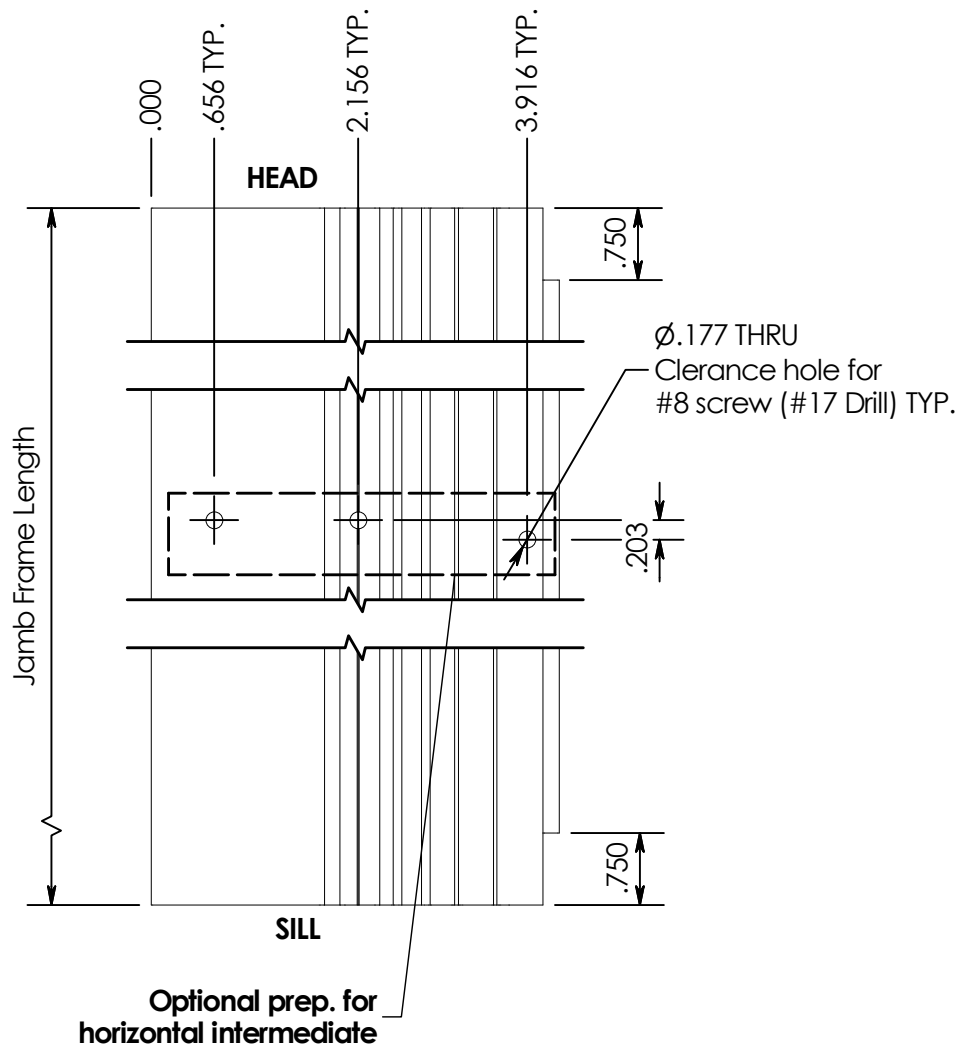
SCALE:

N.T.S.

PART #:

1900T-11

REVISED 2019-09-12



DESCRIPTION:

JAMB PREP

PRODUCT:

1900 SERIES FRAMING
DOUBLE GLAZED

DATE:

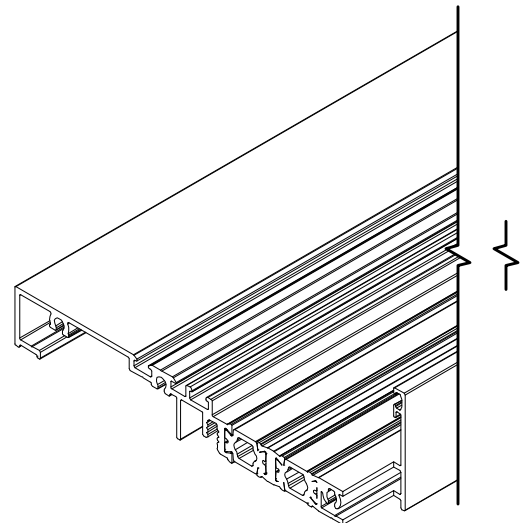
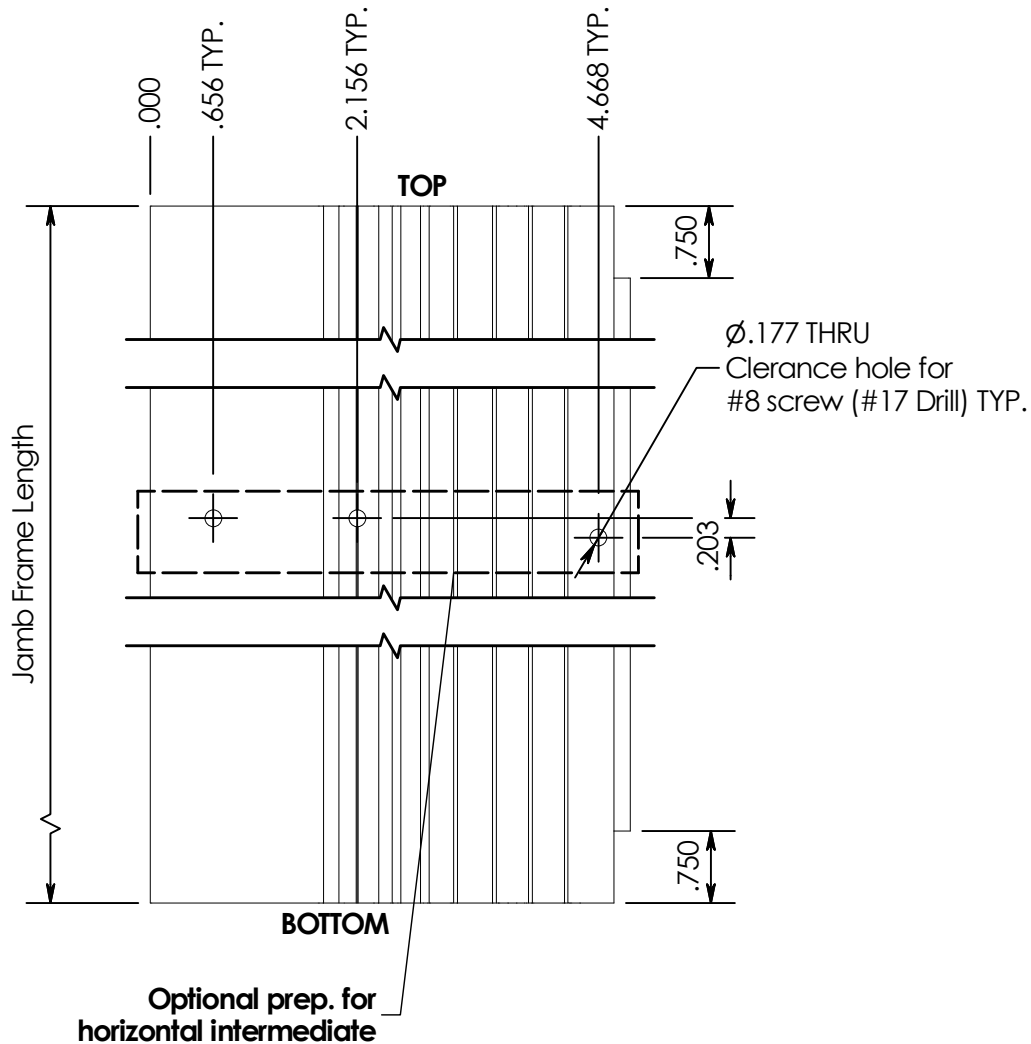
OCTOBER 2016

SCALE:

N.T.S.

PART #:

1900-12



ISOMETRIC
Part No.: 19032

DESCRIPTION:

JAMB PREP

PRODUCT:

1900 SERIES FRAMING TRIPLE
GLAZED

DATE:

OCTOBER 2016

SCALE:

N.T.S.

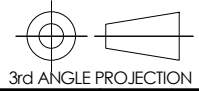
PART #:

1900T-12



THIS DRAWING AND THE INFORMATION CONTAINED
HEREIN IS PROPRIETARY TO ALUMICOR AND SHALL
NOT BE REPRODUCED, COPIED OR DISCLOSED IN WHOLE
OR IN PART OR USED FOR MANUFACTURE OR
FOR ANY PURPOSE WITHOUT THE
WRITTEN PERMISSION OF ALUMICOR

DESIGN STATE:



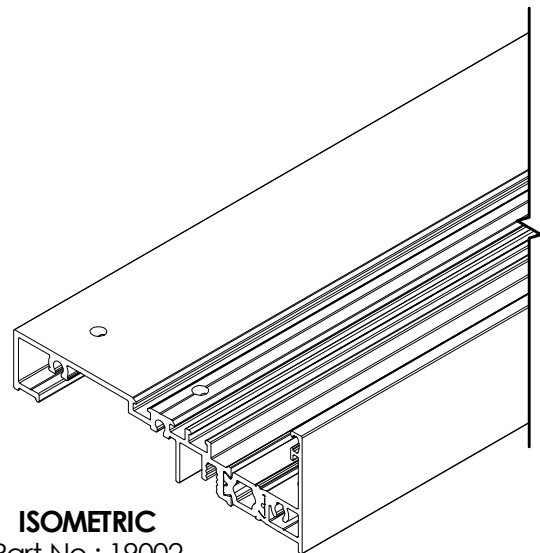
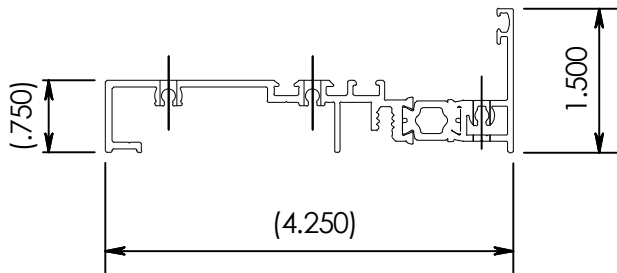
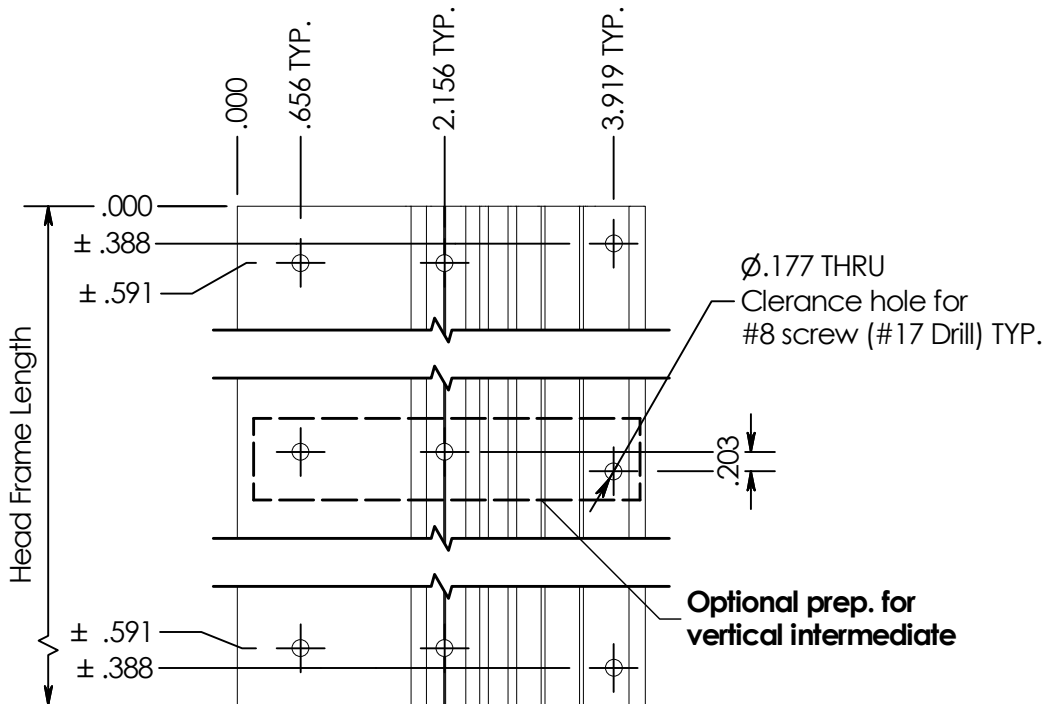
IMPERIAL

CHECK 1st of

APPROVED

YES ☐

NO ☐



ISOMETRIC
Part No.: 19002

DESCRIPTION:

HEAD PREP

PRODUCT:

1900 SERIES FRAMING
DOUBLE GLAZED

DATE:

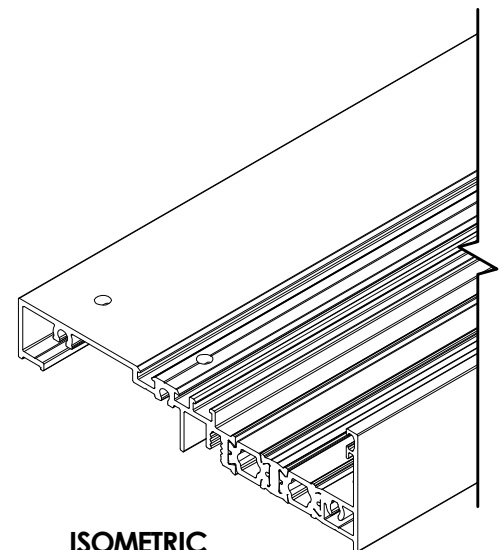
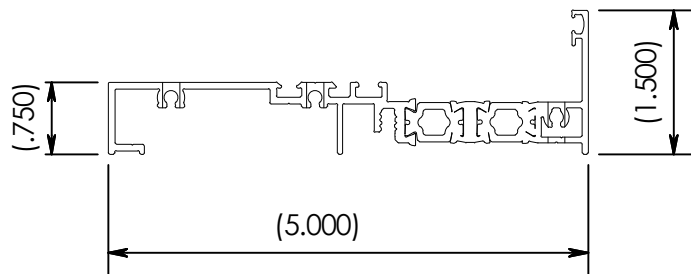
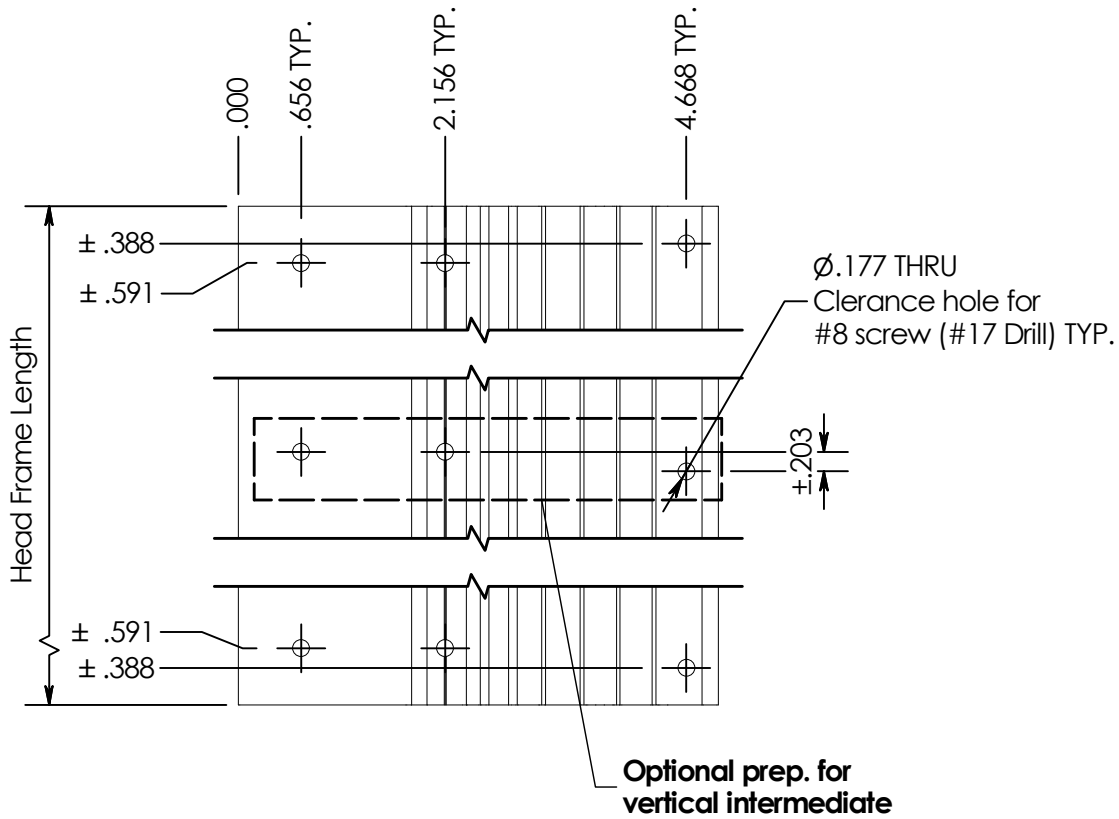
OCTOBER 2016

SCALE:

N.T.S.

PART #:

1900-13



ISOMETRIC
Part No.: 19032

DESCRIPTION:

HEAD PREP

PRODUCT:

1900 SERIES FRAMING TRIPLE
GLAZED

DATE:

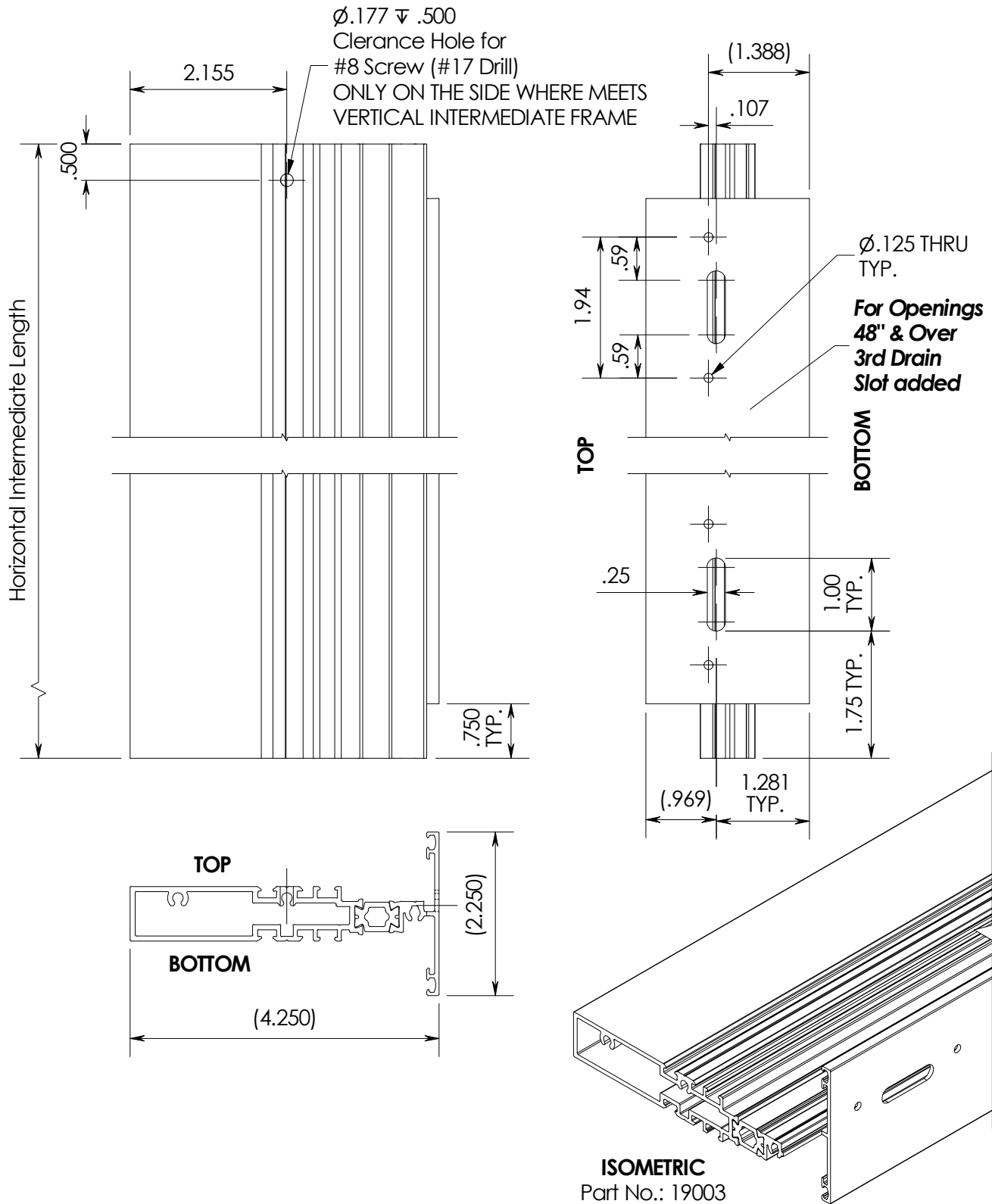
OCTOBER 2016

SCALE:

N.T.S.

PART #:

1900T-13

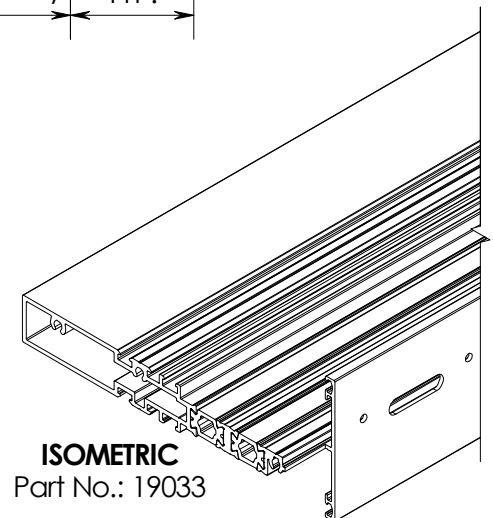
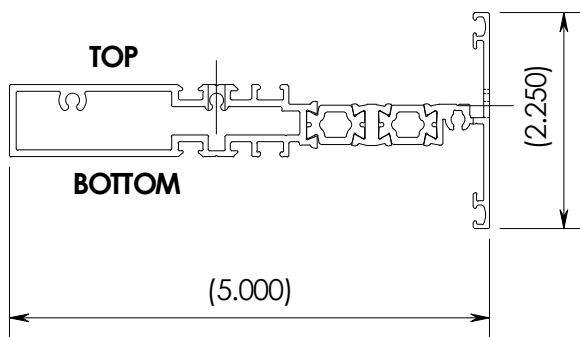
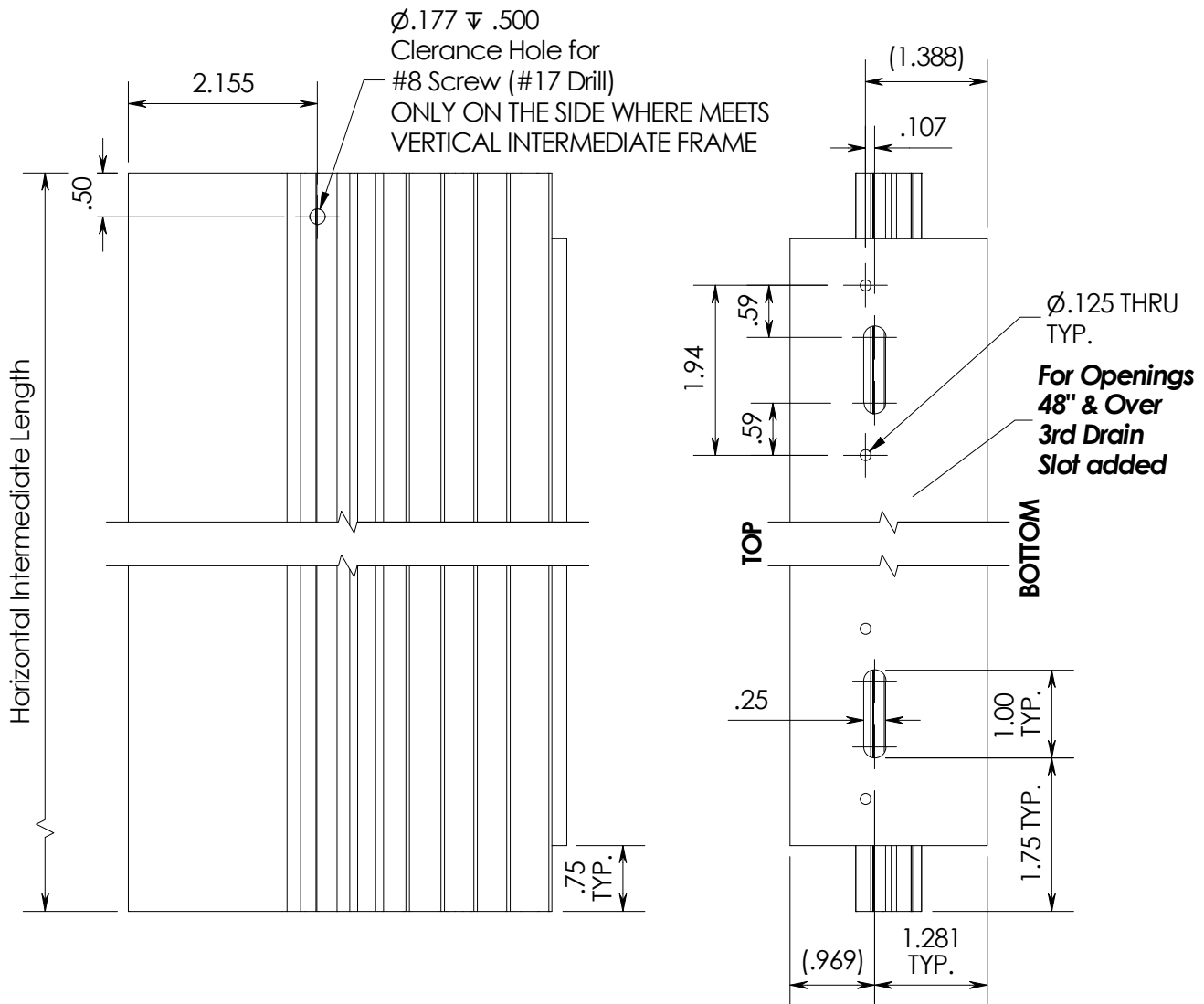


DESCRIPTION:
INTERMEDIATE HORIZONTAL
PREP - DGL

PRODUCT:
1900 SERIES FRAMING
DOUBLE GLAZED

DATE:
OCTOBER 2016
SCALE:
N.T.S.

PART #:
1900-14

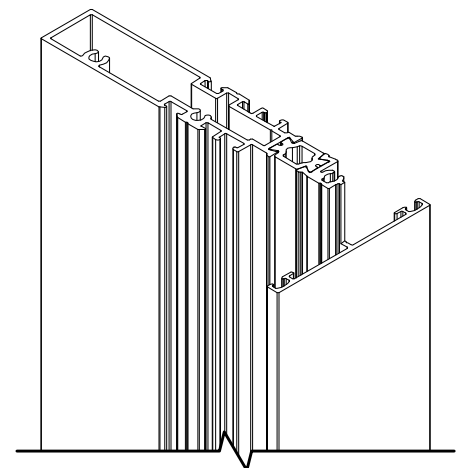
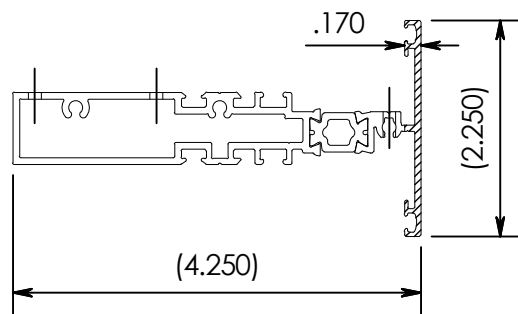
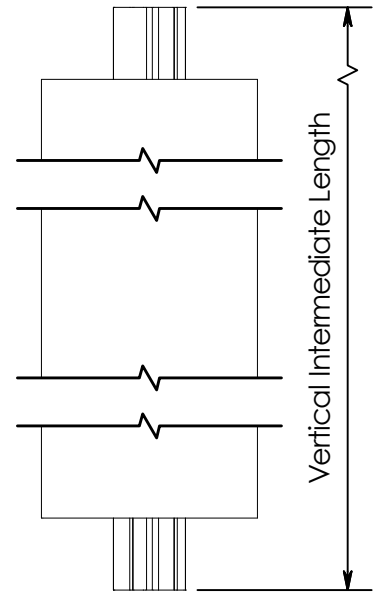
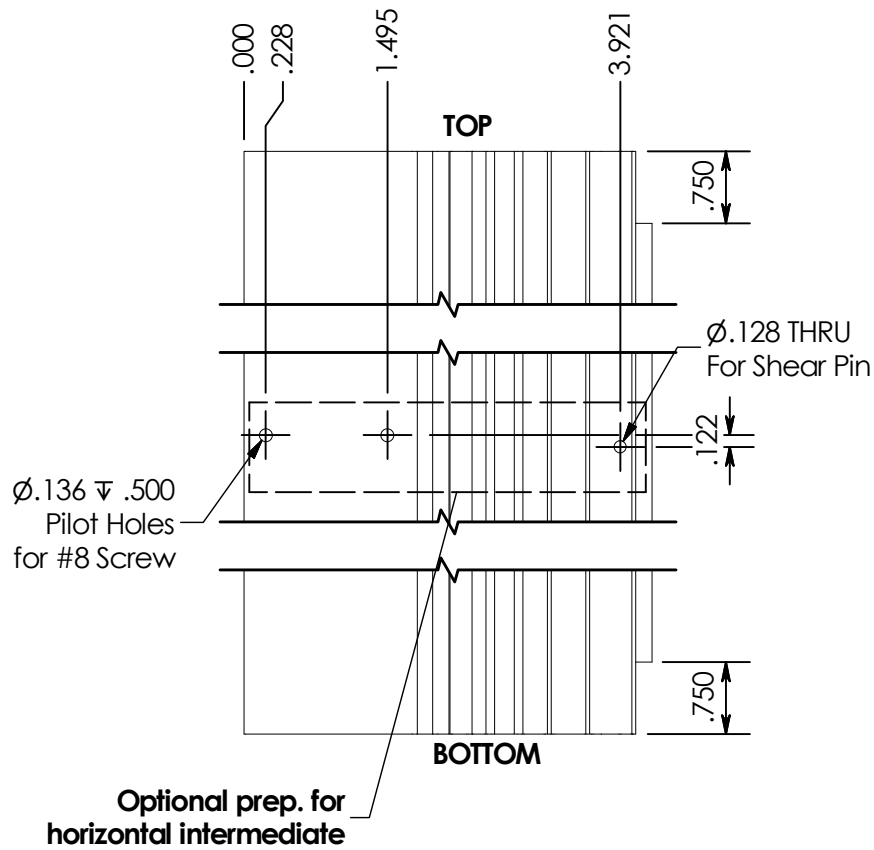


DESCRIPTION:
INTERMEDIATE HORIZONTAL
PREP - TGL

PRODUCT:
1900 SERIES FRAMING TRIPLE
GLAZED

DATE:
OCTOBER 2016
SCALE:
N.T.S.

PART #:
1900T-14



ISOMETRIC
Part No.: 19003

DESCRIPTION:

INTERMEDIATE VERTICAL PREP

PRODUCT:

1900 SERIES FRAMING
DOUBLE GLAZED

DATE:

OCTOBER 2016

SCALE:

N.T.S.

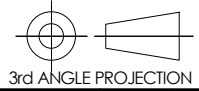
PART #:

1900-15



THIS DRAWING AND THE INFORMATION CONTAINED
HEREIN IS PROPRIETARY TO ALUMICOR AND SHALL
NOT BE REPRODUCED, COPIED OR DISCLOSED IN WHOLE
OR IN PART OR USED FOR MANUFACTURE OR
FOR ANY PURPOSE WITHOUT THE
WRITTEN PERMISSION OF ALUMICOR

DESIGN STATE:



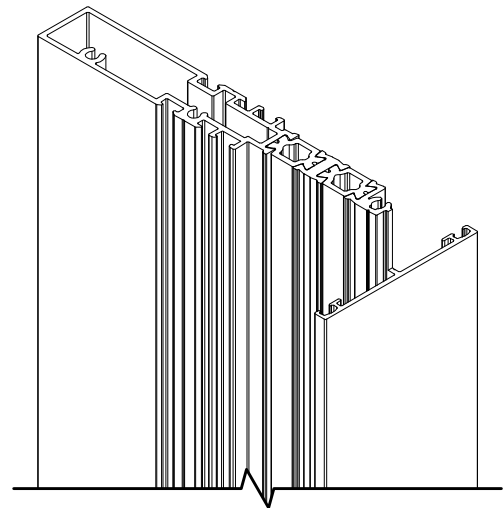
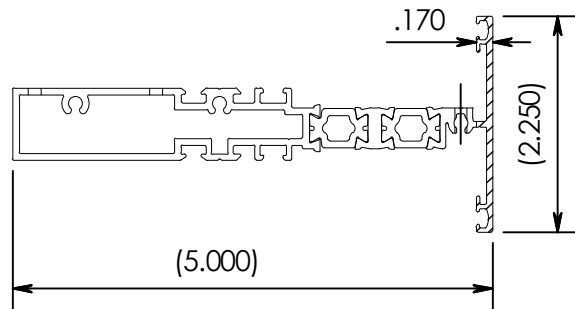
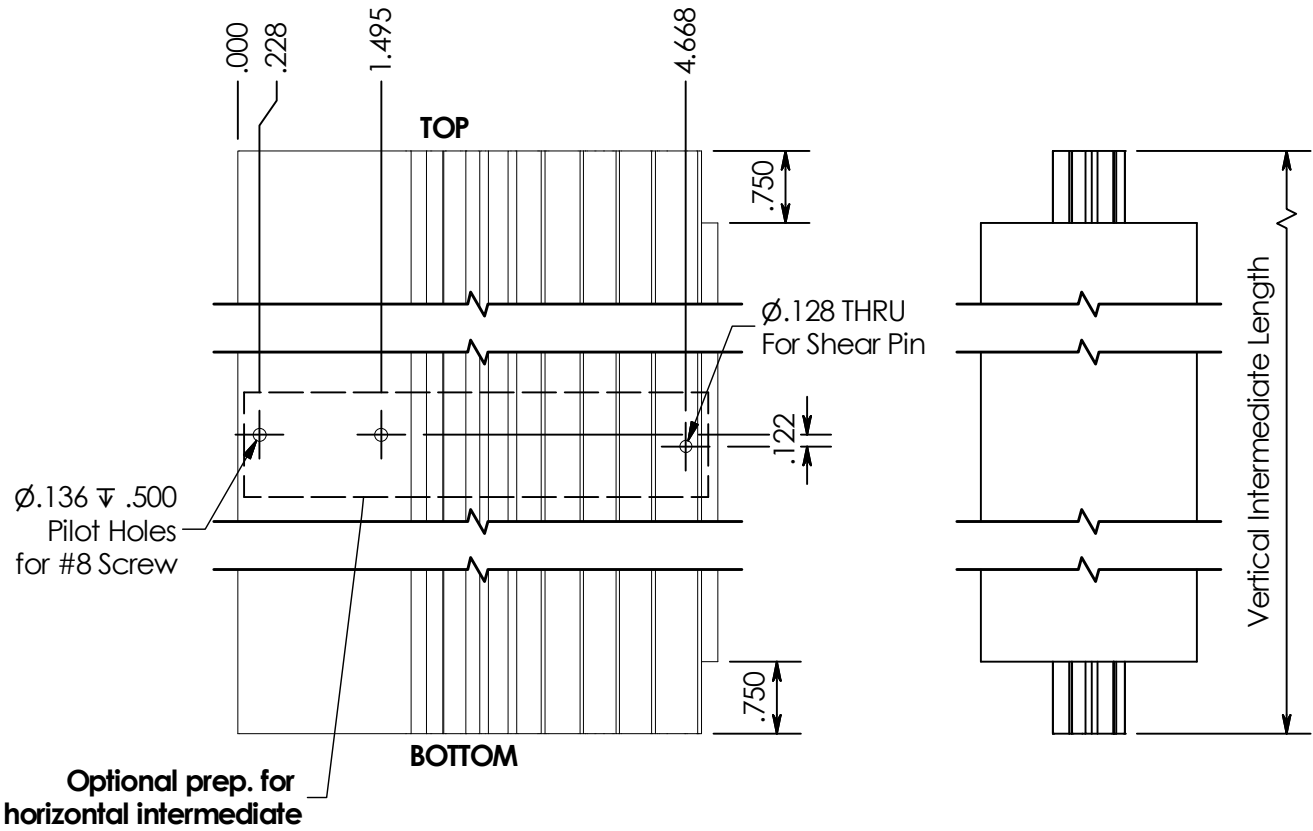
IMPERIAL

CHECK 1st of

APPROVED

YES ☐

NO ☐



ISOMETRIC
Part No.: 19033

DESCRIPTION:

INTERMEDIATE VERTICAL

PRODUCT:

1900 SERIES FRAMING TRIPLE
GLAZED

DATE:

OCTOBER 2016

SCALE:

N.T.S.

PART #:

1900T-15