



Lean-To House
Blind Bay, NS



Photographer: MacKay-Lyons Sweetapple Architects

TerraPorte 7600

Elegant Terrace Door



Catalogue Pages



Specifications



CAD Details

www.alumicor.com

TerraPorte 7600

Elegant Terrace Door

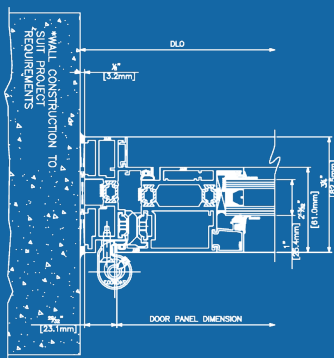


TerraPorte 7600 In-Swing

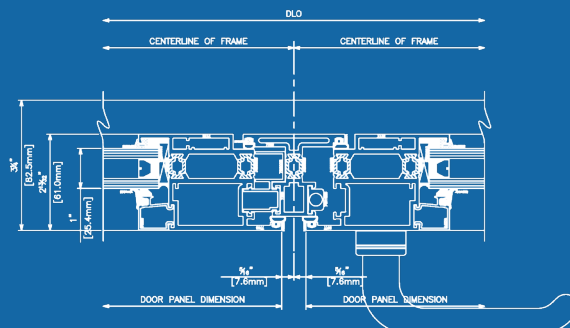
- Thermally broken terrace door with polyamide strut
- Multi-point locking
- Double glazed
- Cost-effective for high-rise residential projects
- Can be integrated in all Alumicor curtain wall and fixed window systems
- Dual-finish capability
- Sightline : 5-1/16" (128.6mm)
- Single door configuration only
- Large size capability
- Completely factory-fabricated by Alumicor for quality assurance
- Complies with NAFS AW

TerraPorte 7600 Out-Swing

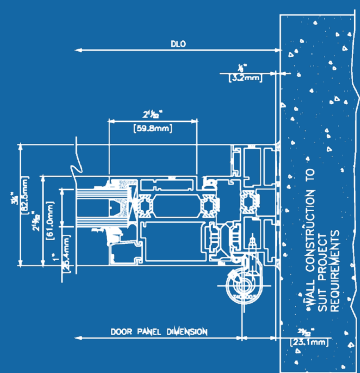
- Thermally broken terrace door with polyamide strut
- Multi-point locking allows for superior air/water performance and peace of mind security
- Ideal for high-rise residential projects
- Can be integrated in all Alumicor curtain wall and fixed window systems
- Dual-finish capability
- Sightline : 4-1/2" (114.3mm)
- Single or in pair configurations
- Large size capability
- Completely factory-fabricated by Alumicor for quality assurance
- Comply with NAFS AW (single) and CW (pair)



LEFT JAMB



MEETING STILES



RIGHT JAMB

Alumicor TerraPorte 7600 Product Specifications

Application: Cost-effective for high-rise residential projects.

Description: Thermally broken terrace door for superior energy performance.

Face Width:	System Depth:	Glass:	Air:	Water:	Structural:	Acoustic (STC)	Acoustic (OITC)	U-Factor
Sight Line: 117.5mm (4-5/8")	82.6mm (3-1/4")	Dual Glazed: 25.4mm (1")	Single Inswing: 0.111 L/s.m.2 (0.022 cfm/ft2) @300Pa (6psf) Single Outswing: 0.02 L/s.m.2 (0.003 cfm/ft2) @300Pa (6psf) Single AccessABLE: 0.03 L/s.m.2 (0.001 cfm/ft2) @300Pa (6psf) Pair Outswing: 0.02 L/s.m.2 (0.0005 cfm/ft2) @300Pa (6psf) Pair AccessABLE: 0.22 L/s.m.2 (0.04 cfm/ft2) @300Pa (6psf)	Single Inswing: 720Pa (15psf) Single Outswing: 720Pa (15psf) Single AccessABLE: 720Pa (15psf) Pair Outswing: 960Pa (20psf) Pair AccessABLE: 730Pa (15psf)	Design: Single Inswing: 3360Pa (70psf) Single Outswing: 3360Pa (70psf) Single AccessABLE: 3360Pa (70psf) Pair Outswing: 2160Pa (45psf) Pair AccessABLE: 1440Pa (30psf) Overload: Single Inswing: 5040Pa (105psf) Single Outswing: 5040Pa (105psf) Single AccessABLE: 5040Pa (105psf) Pair Outswing: 2880Pa (60psf) Pair AccessABLE: 2160Pa (45psf)	Out-swing 35 In-swing 35	Out-swing 29 In-swing 30	NA